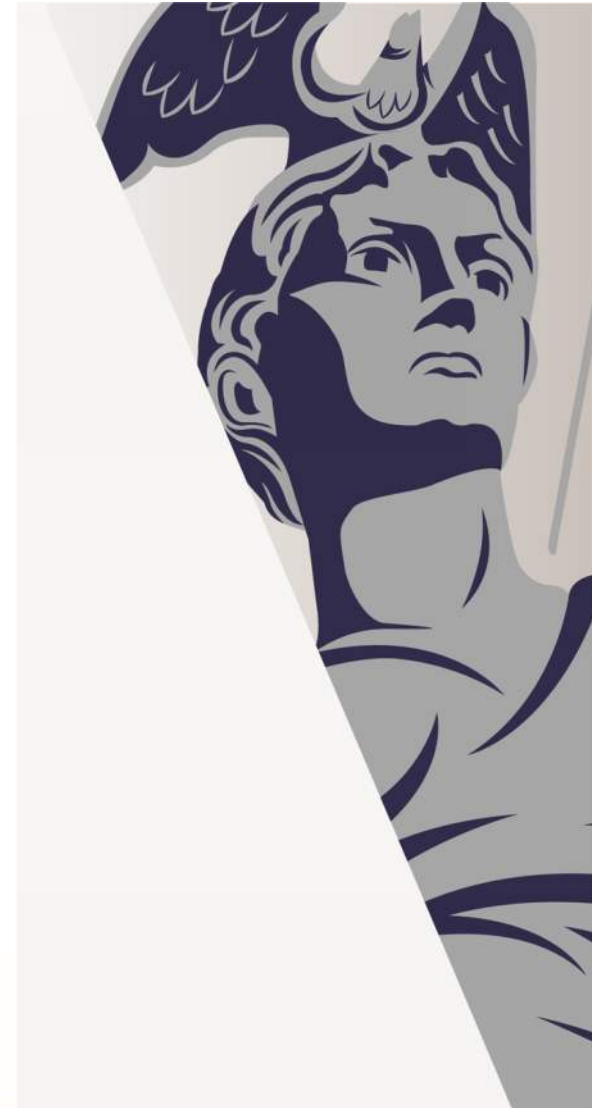


White River Innovation District (Henry Street Bridge) ST-31-059


Public Information Meeting
July 8, 2025

Program starts at 5:30 p.m.

THE CITY OF INDIANAPOLIS



Agenda

- Presentation begins – 5:30 p.m.
- Welcome from Director Wilson
- Remarks from Councilor Jones
- Construction and infrastructure updates
- Archaeology status
- BREAK 
- Research updates
- Artifacts and osteological analysis
- Q&A

Presentation after the break contains digitized models of human remains


Welcome

DPW Director Todd Wilson

Welcome

- Thank you to the Edison School of the Arts for hosting our meeting tonight
- Thank you for attending tonight's meeting
- Thank you to our Community Advisory Group members for their continued collaboration with the City
- Thank you to the archaeology team at Stantec for their dedication

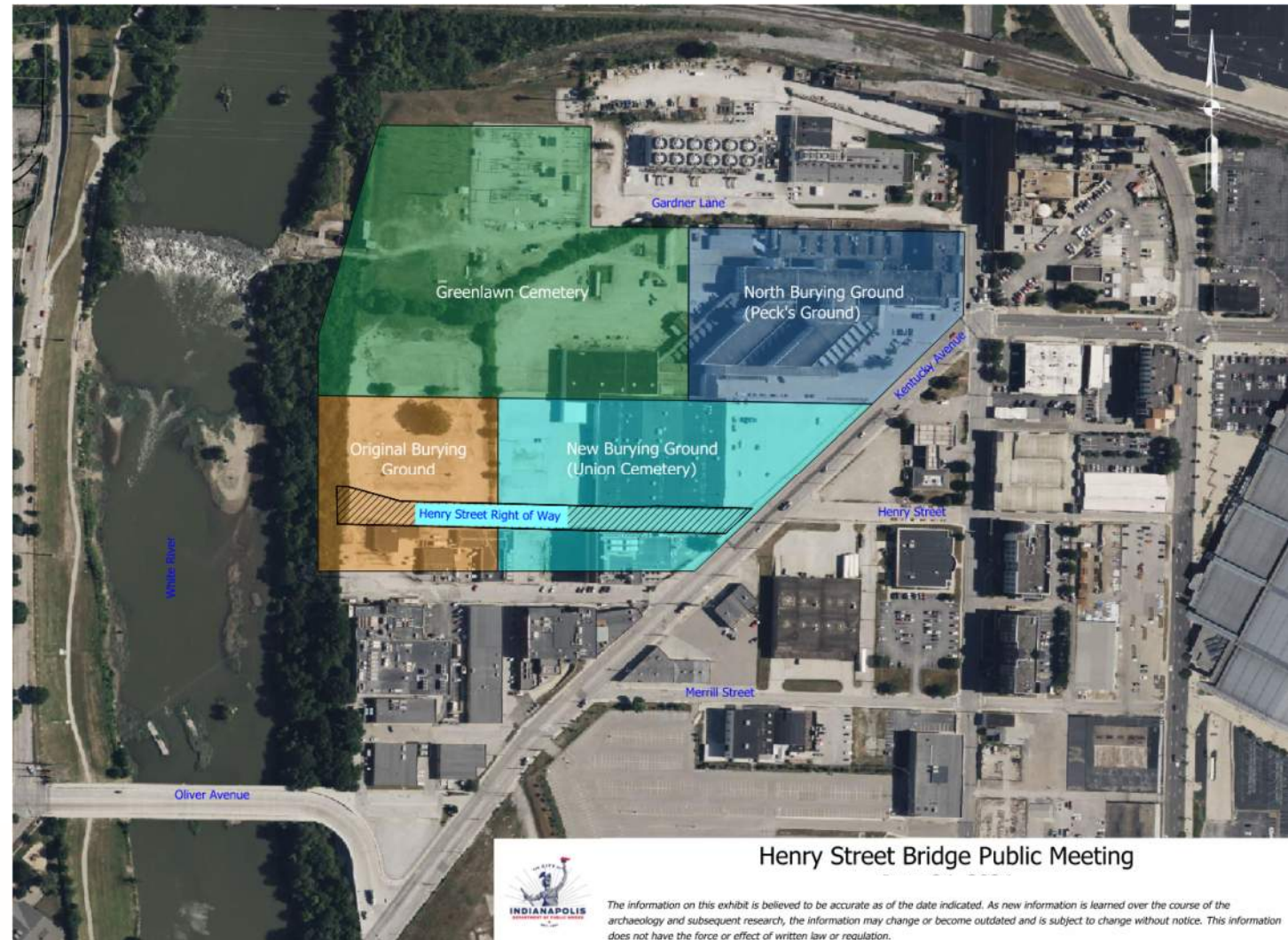
Agenda

- Presentation begins – 5:30 p.m.
- Welcome from Director Wilson
- Remarks from Councilor Jones
- Construction and infrastructure updates
- Archaeology status
- BREAK 
- Research updates
- Artifacts and osteological analysis
- Q&A

Presentation after the break contains digitized models of human remains

Henry Street Project Limits

- Construction is within Henry St. right of way
- Only 2 of the 4 cemeteries, collectively known as “Greenlawn,” are impacted by Henry Street construction



Remarks

City-County Councilor Kristin Jones

Infrastructure Update

DPW Project Manager Shannon Killion

Comment and Question Cards

- Comment and question cards are available on the tables
- Turn in before the Q&A portion of this meeting
- Leave at the table when you leave the meeting
- Submit via e-mail to contact@wridinfrastructure.com

Construction Phasing

Phase 1 – Utilities for White River Innovation District and road construction on west side of White River, including:

- D Loop
- South White River Parkway
- Henry St.
- Holly Ave.

Phase 2 – Henry Street bridge construction

Phase 3 – Henry Street construction from White River to Kentucky Ave.

West Side Improvements – Phase 1

Construction nearing completion on:

- The D Loop from Washington St. to S. White River Pkwy.
- Relocation of S. White River Pkwy. to the west, connecting to the D Loop and Oliver St.
- Extending Henry St. from Harding St. to the White River
- Constructing Holly Ave. to connect Oliver St. to the new Henry St.



West Side Improvements – Phase 1

- By the end of 2025:
 - Utilities will be servicing the White River Innovation District
 - Roadway construction will be 100% complete

www.wridinfrastructure.com



June 2025

Henry Street Bridge – Phase 2

- Construction of the bridge over the White River between Washington and Oliver
 - Provide added vehicular and pedestrian connectivity between the west side and downtown
 - Reduce existing congestion on adjacent roadways
- Features 4 rings centered on the bridge, over the water
- Construction substantially complete by the end of 2026



Henry Street Bridge – Aerial



Henry Street Connection to Kentucky Ave. – Phase 3

- Design is approximately 90% complete
- Construction of this segment will begin once the archaeologists complete their work, and the State Historic Preservation Office (SHPO) acknowledges completion of field work
- Construction could begin in early 2026

Excavation Status & Summary

Principal Investigator Ryan Peterson

Henry Street Bridge Project – Greenlawn Cemetery



Project area overview in February 2025

Project area overview in April 2025



Excavation Process



Mechanically stripping overburden fill to uncover shafts



Field supervisor monitoring stripping

Excavation Process



Top, data team mapping shafts with GPS technology; right, using a drone to map and document the site



THE CITY OF INDIANAPOLIS

Excavation Process

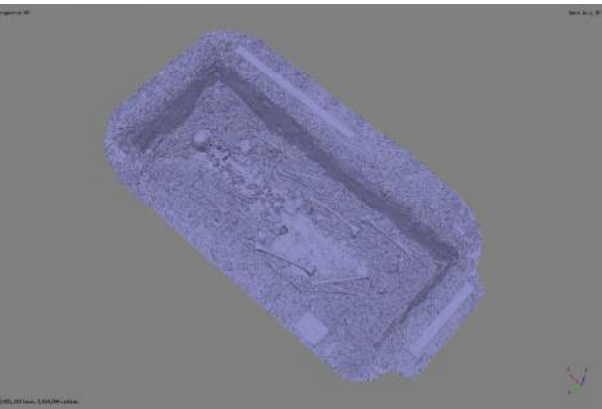
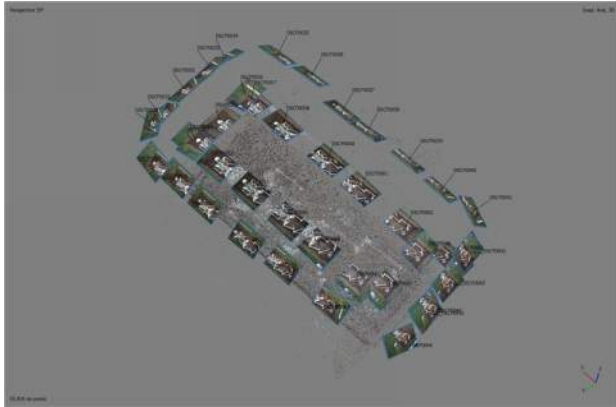


Shafts mapped and ready for excavation



Crew beginning hand excavation of shaft

Excavation Process



Structure from Motion (SfM) photogrammetry 3D modeling
(**Plastic skeleton for demonstration**)



Photo capture process for SfM modeling
of excavated shaft

Excavation Process

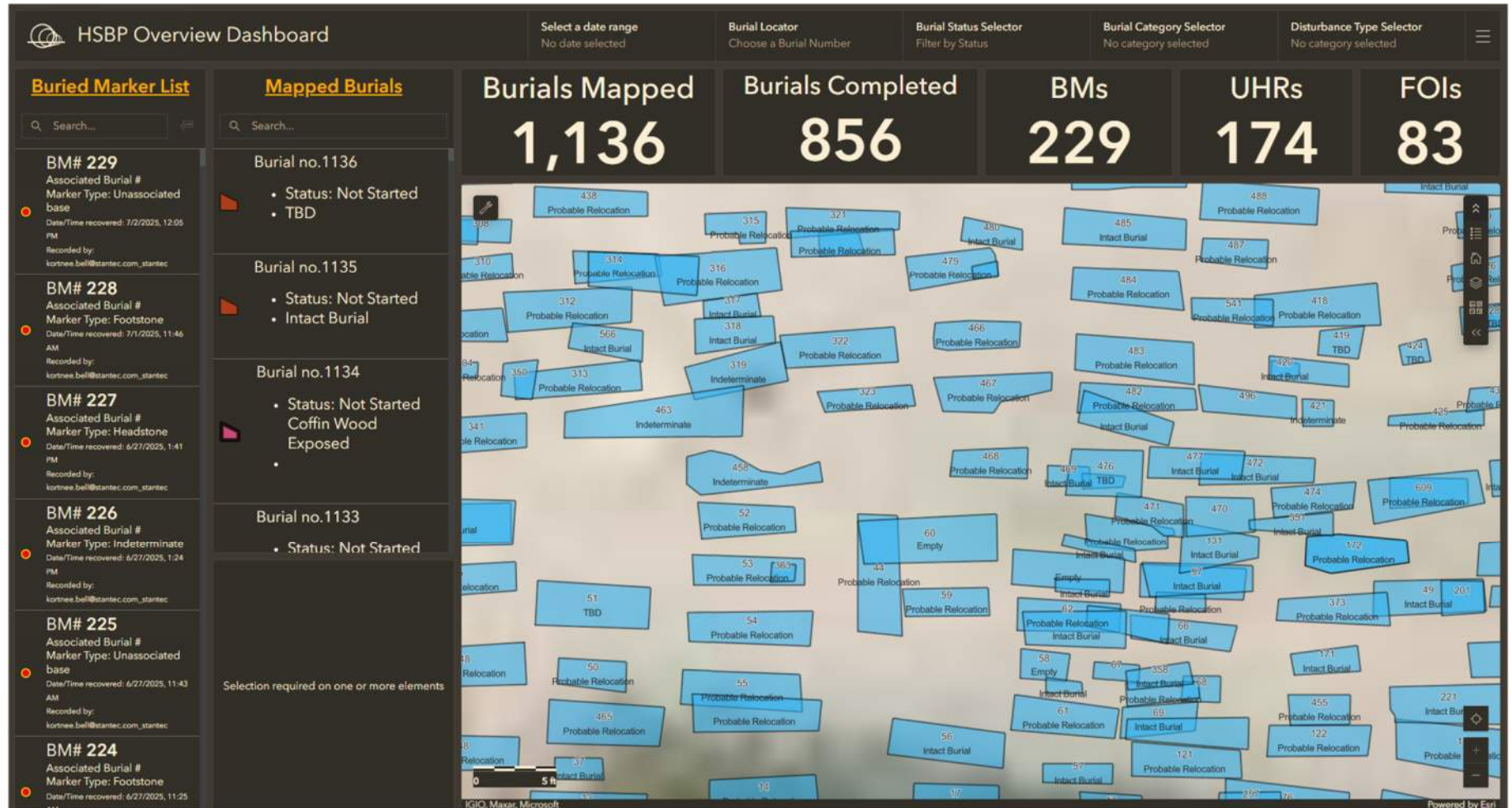


Boxes from excavated shafts ready for transport to IU-Indianapolis bioarchaeology lab



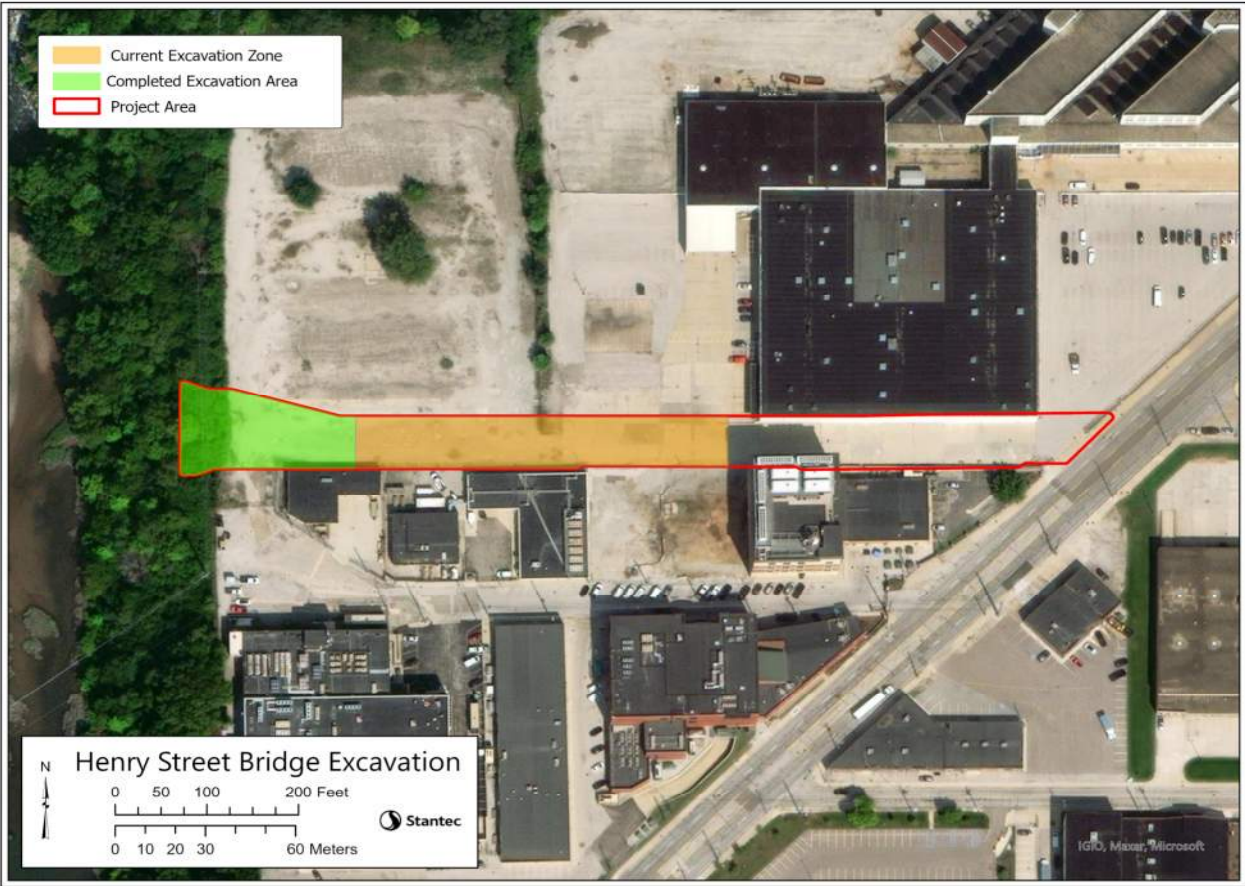
Chain of custody transfer of boxes to bioarchaeology lab

Project Dashboard



THE CITY OF INDIANAPOLIS

Website Updates



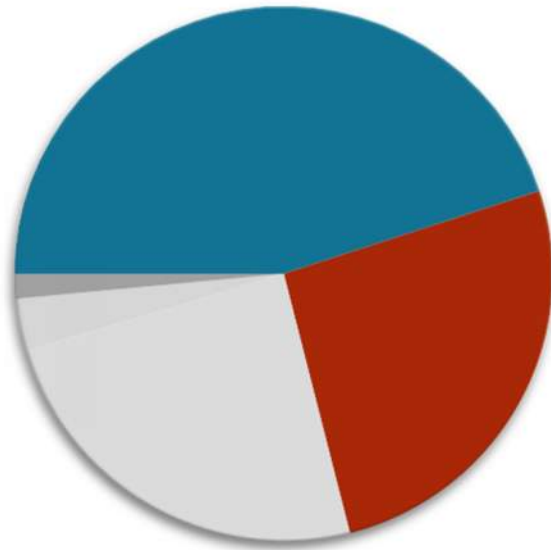
Grave Shafts Identified*

Week Of	Week	Cumulative	Week Of	Week	Cumulative
Jul 4, 2025	109	1,136	Feb. 28, 2025	42	362
Jun. 27, 2025	90	1,027	Feb. 21, 2025	38	320
Jun. 20, 2025	32	937	Feb. 14, 2025	24	282
Jun. 13, 2025	54	905	Feb. 7, 2025	51	258
Jun. 6, 2025	75	851	Jan. 31, 2025	34	207
May 30, 2025	25	776	Jan. 24, 2025	4	173
May 23, 2025	6	751	Jan. 17, 2025	14	169
May 16, 2025	13	745	Jan. 10, 2025	25	155
May 9, 2025	58	732	Jan. 3, 2025	0	130
May 2, 2025	101	674	Dec. 27, 2024	0	130
Apr. 25, 2025	20	573	Dec. 20, 2024	35	130
Apr. 18, 2025	50	553	Dec. 13, 2024	55	95
Apr. 11, 2025	6	503	Dec. 6, 2024	13	40
Apr. 4, 2025	4	497	Nov. 29, 2024	6	27
Mar. 28, 2025	22	493	Nov. 22, 2024	0	21
Mar. 21, 2025	25	472	Nov. 15, 2024	1	21
Mar. 14, 2025	85	447	Nov. 8, 2024	5	20
Mar. 7, 2025	0	362	Nov. 1, 2024	15	15

*The City does not anticipate being able to share the number of individuals uncovered until after the excavation is complete and osteological research has occurred.

Please note that “grave shaft” does not mean the Minimum Number of Individuals, or MNI. Determining the MNI requires additional research and analysis.

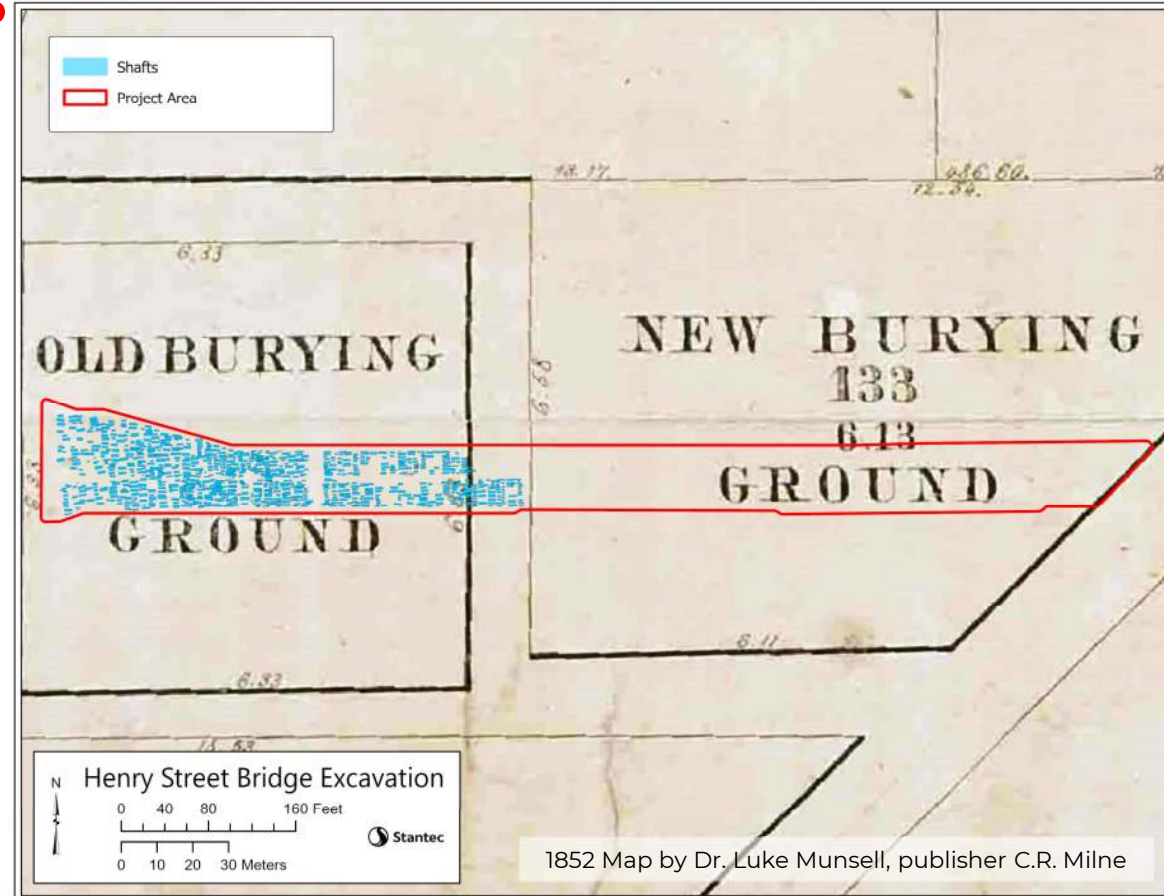
Excavation Progress



Intact Burial	511
Probable Relocation	296
TBD	276
Indeterminate	36
Empty	17

Excavated burial categories

* As of end of day 03 July



Project area with mapped shafts in relation to original cemetery boundaries

BREAK

Presentations after the break contain digitized models of human remains

Research Updates

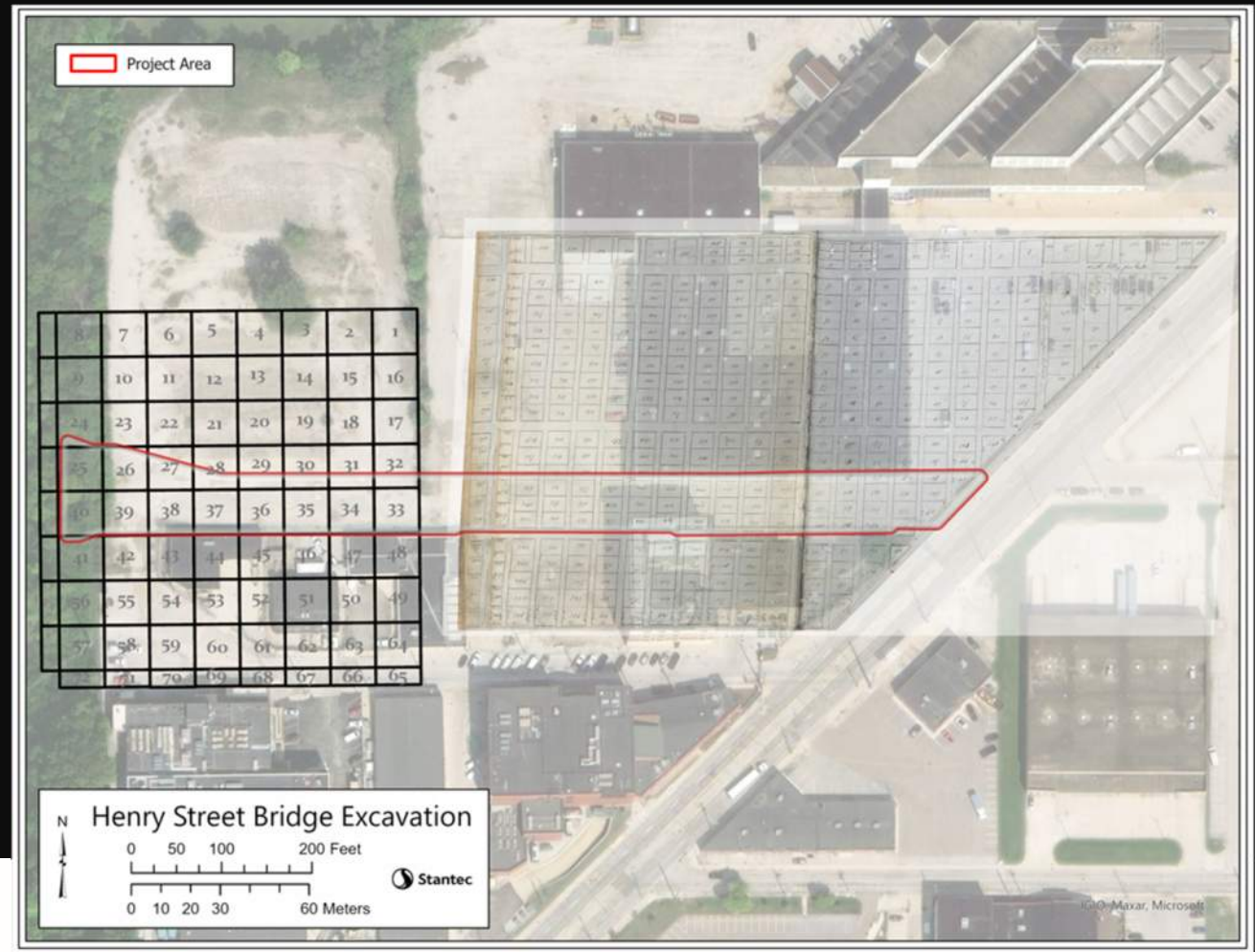
Historian Deedee Davis

A black and white photograph of a cemetery. In the foreground, there is a large, rounded, light-colored stone marker. To its right, a path leads through a grassy area with several upright gravestones of various shapes and sizes. Some of the stones are inscribed with names and dates. In the background, there are more gravestones, trees, and a few buildings under a clear sky.

Henry Street Greenlawn Research

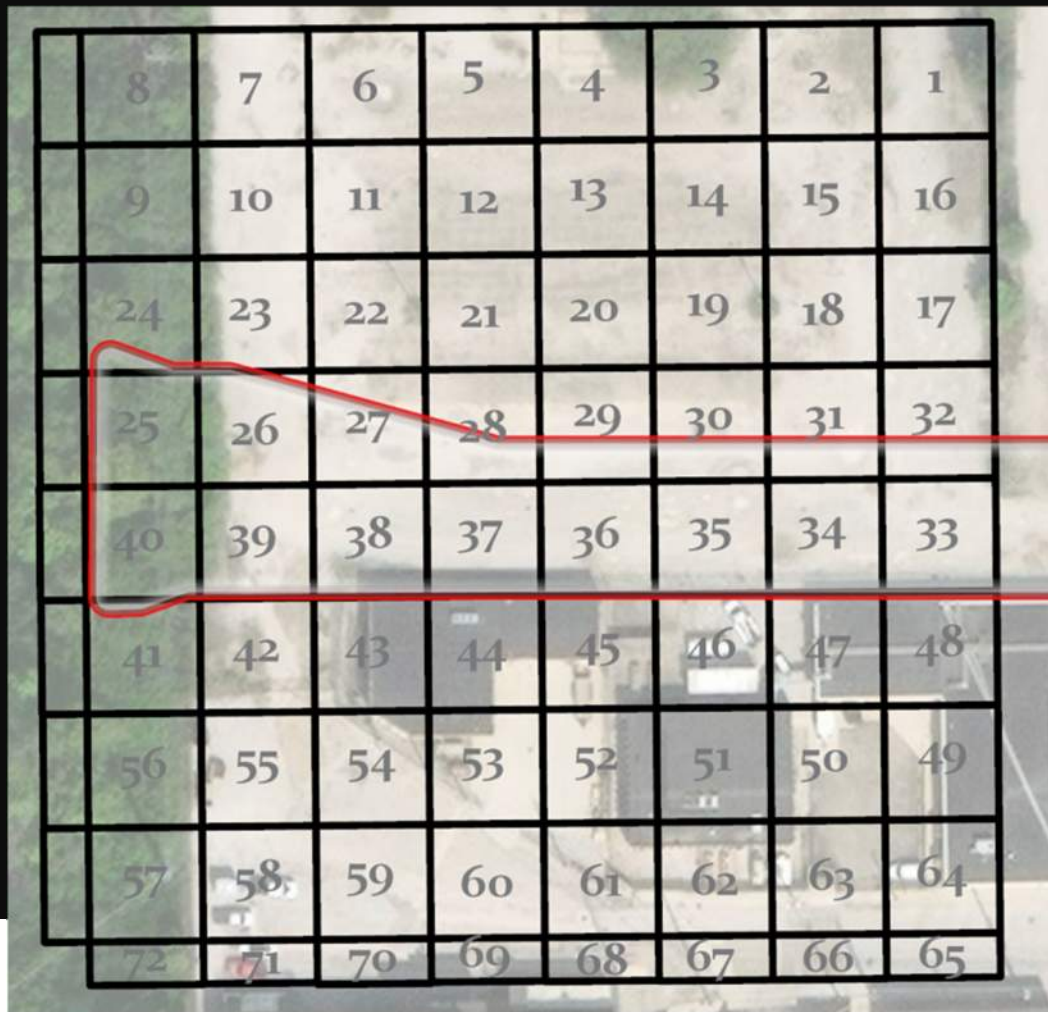
Indiana State Library Image Collections



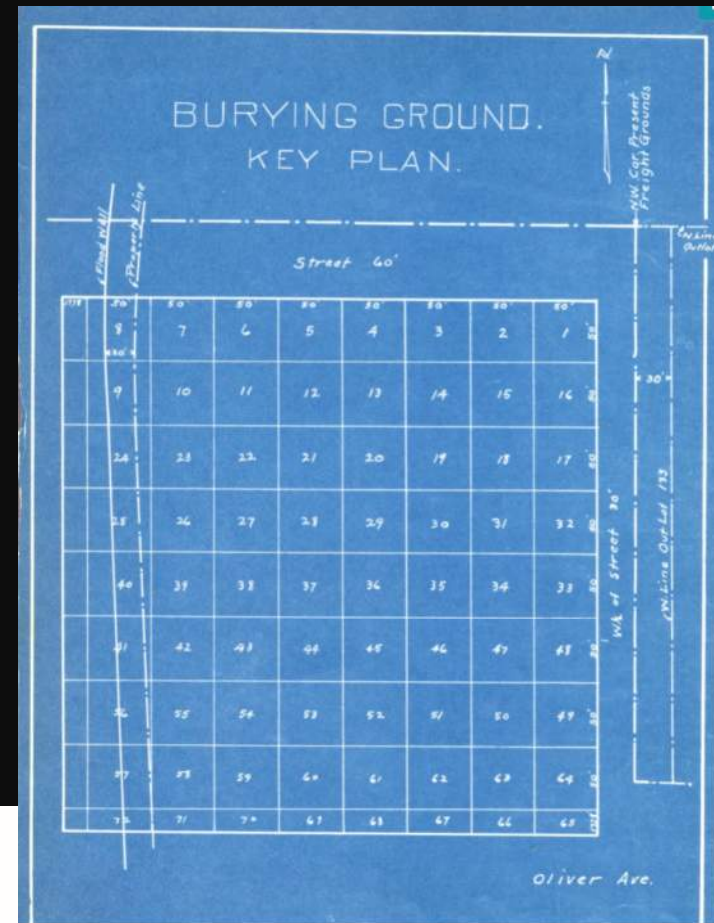
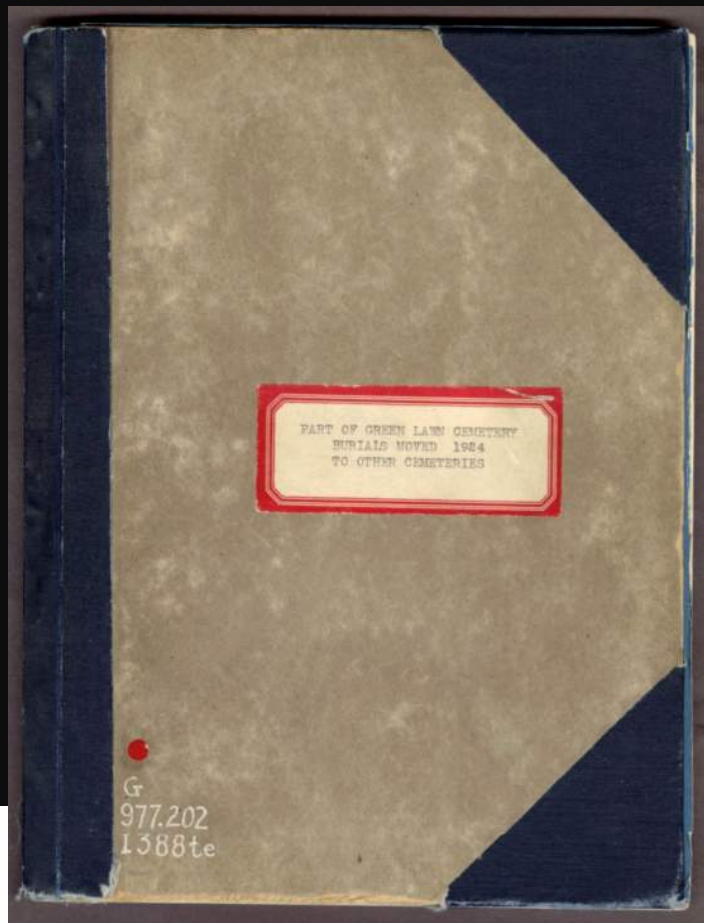


Original Burying Ground

- First burials in 1821
- No platting... early families buried where they wished
- Section was excavated in 1924 and some remains moved to Floral Park Cemetery



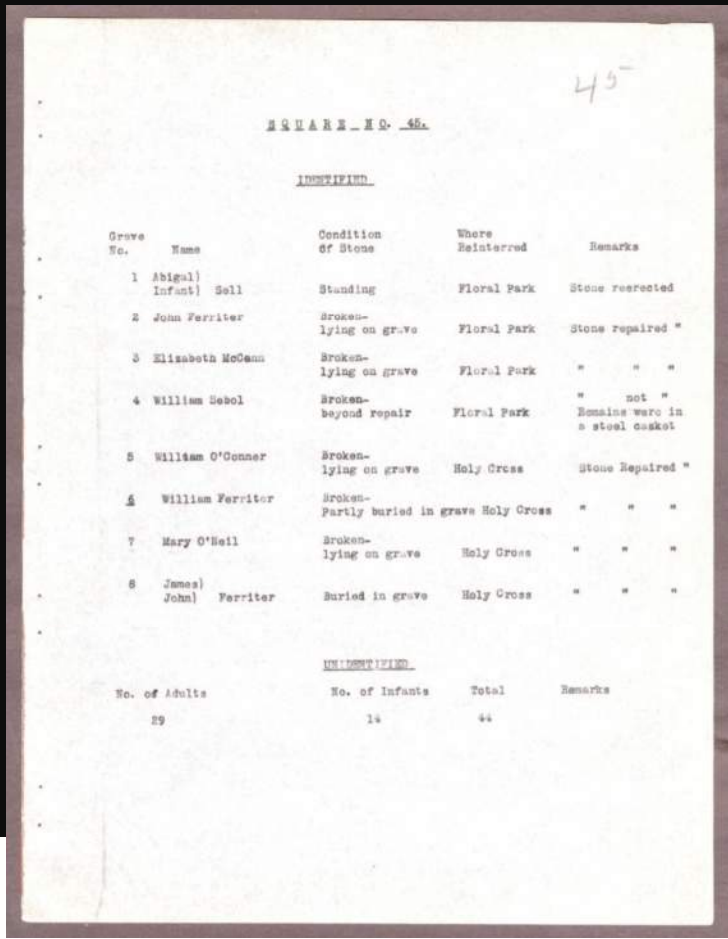
"Part of Green Lawn Cemetery Burials Moved To Other Cemeteries 1924"
Indiana State Library



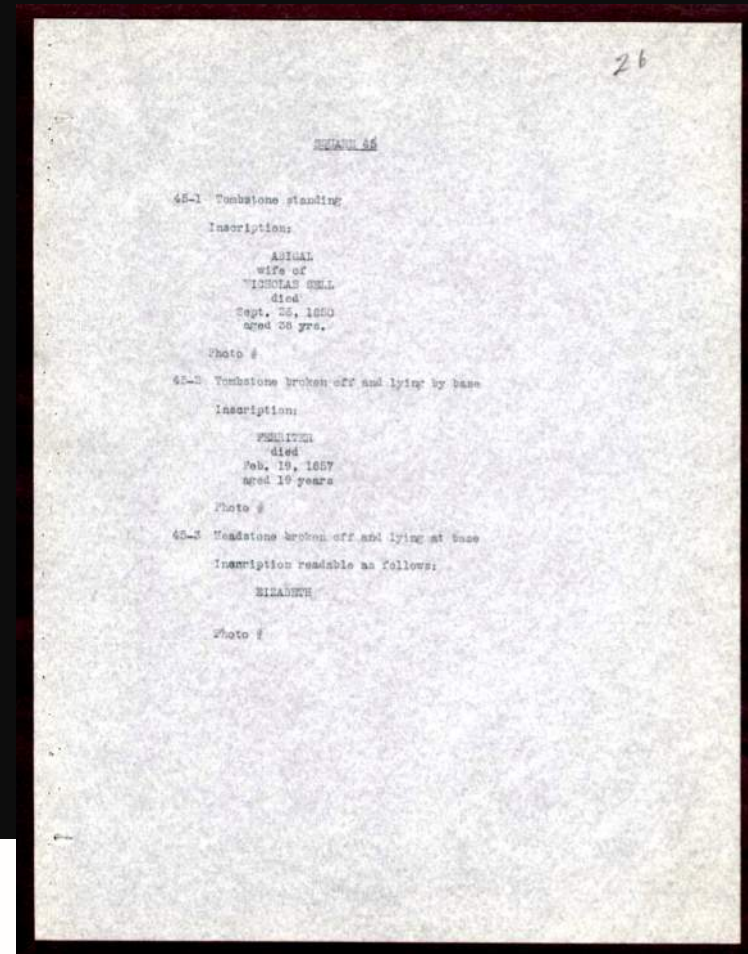
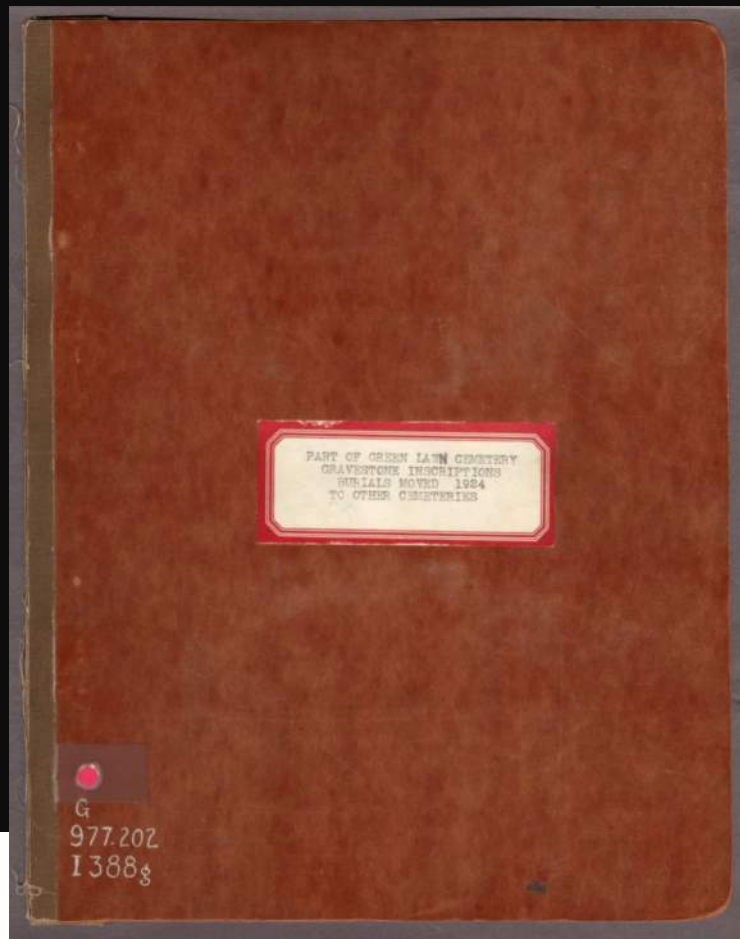




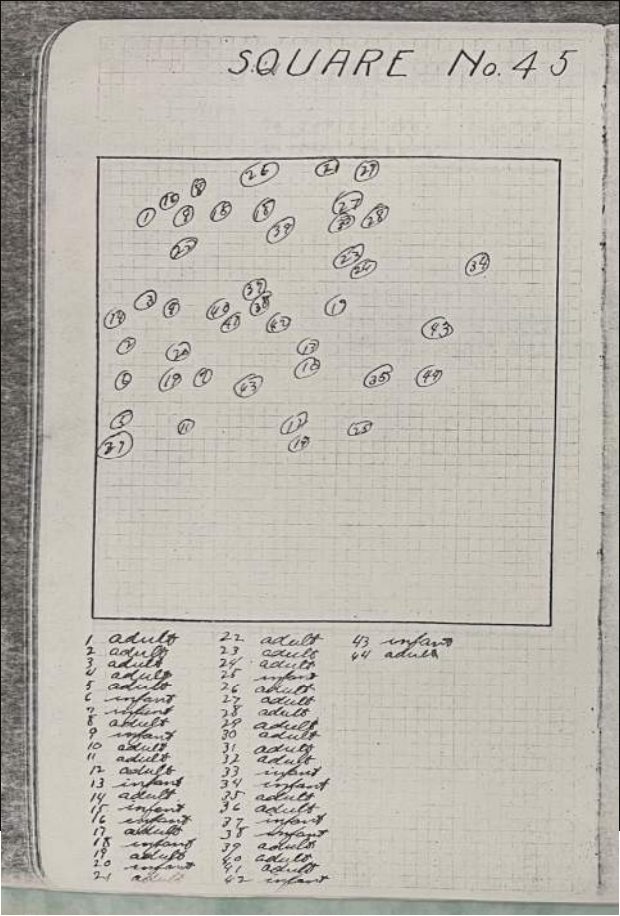
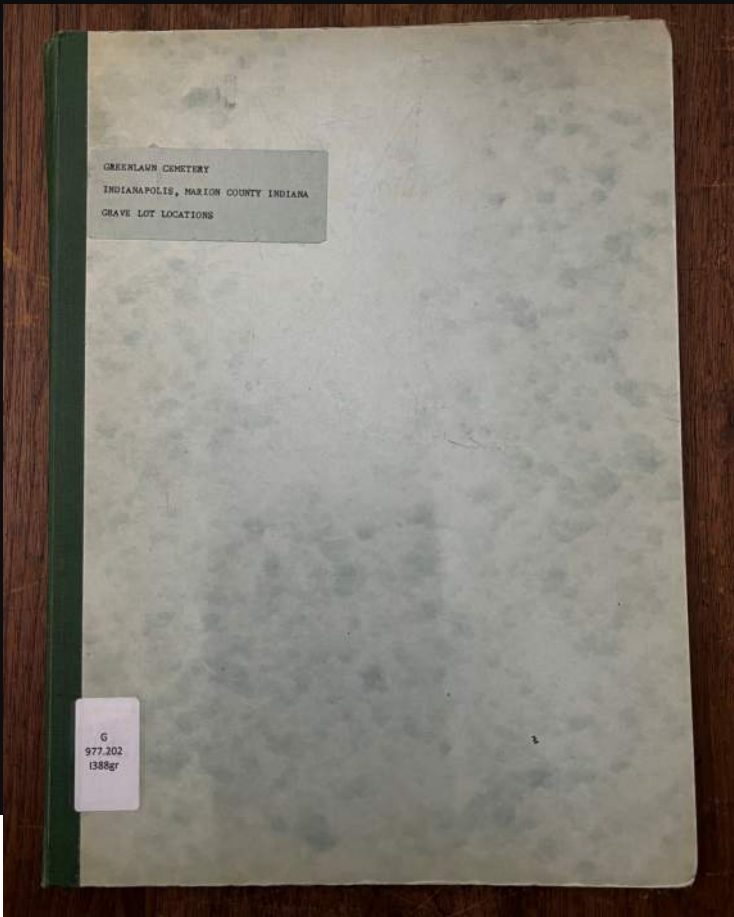
THE CITY OF INDIANAPOLIS



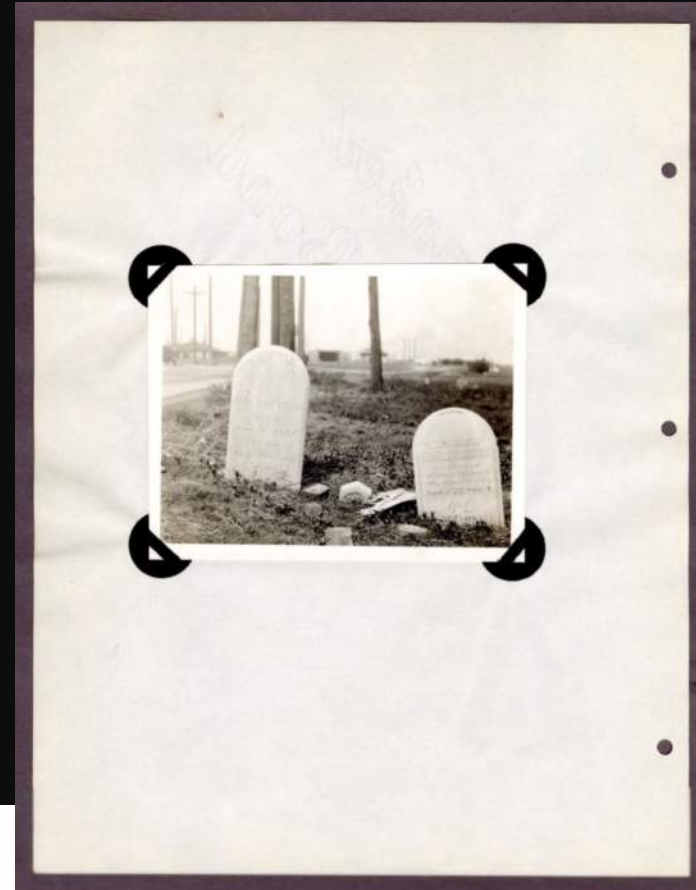
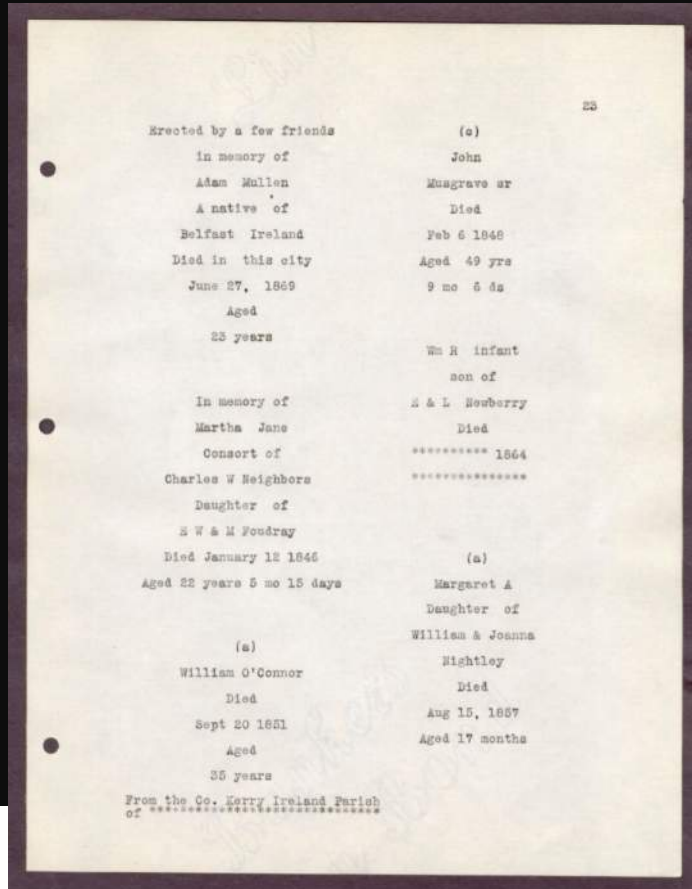
"Part of Green Lawn Cemetery Gravestone Inscriptions," Indiana State Library



Greenlawn Cemetery Indianapolis Marion County Indiana Grave Lot Locations, Indiana State Library



A Transcript of the Gravestones Remaining in Greenlawn Cemetery 1920, J. R. H. Moore, Indiana State Library





2025 Henry Street Excavation
Headstone Discovery

Dorcas A. Frazee

Greek origin = gazelle

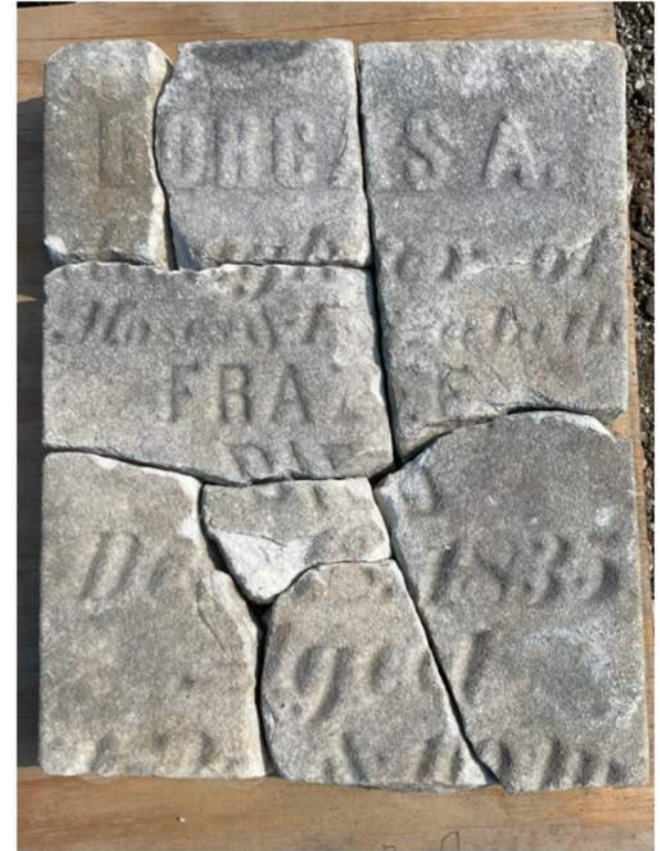
Old Burying
Ground 1920



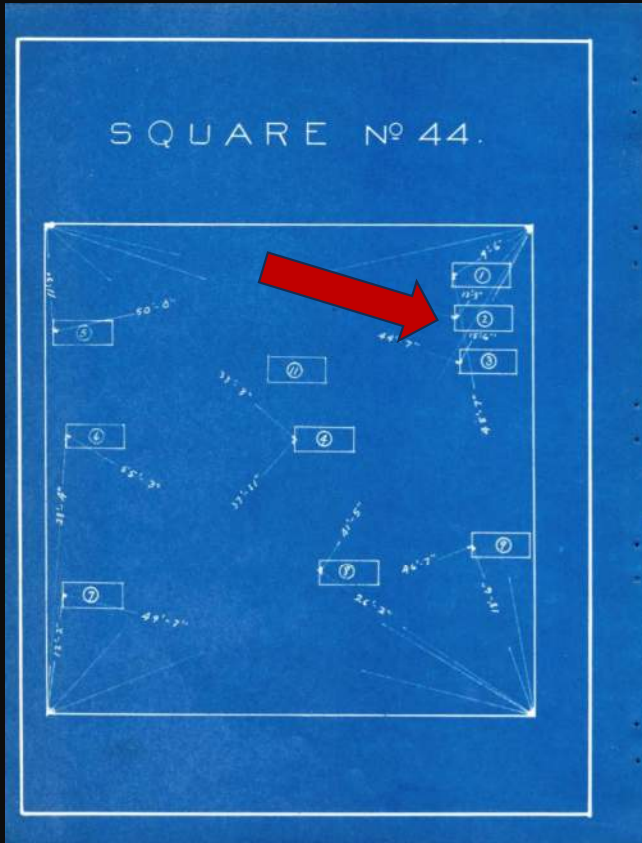
Floral Park Cemetery
2018

Transcript of the Gravestones Remaining in Greenlawn Cemetery 1920,
Indiana State Library

Dorcas A
Daughter of
Moses & Elizabeth
Frazee
Died
Dec 1 1835
Aged



Part of Green Lawn Cemetery Burials Moved To Other Cemeteries 1924, Indiana State Library



SQUARE N^o 44.

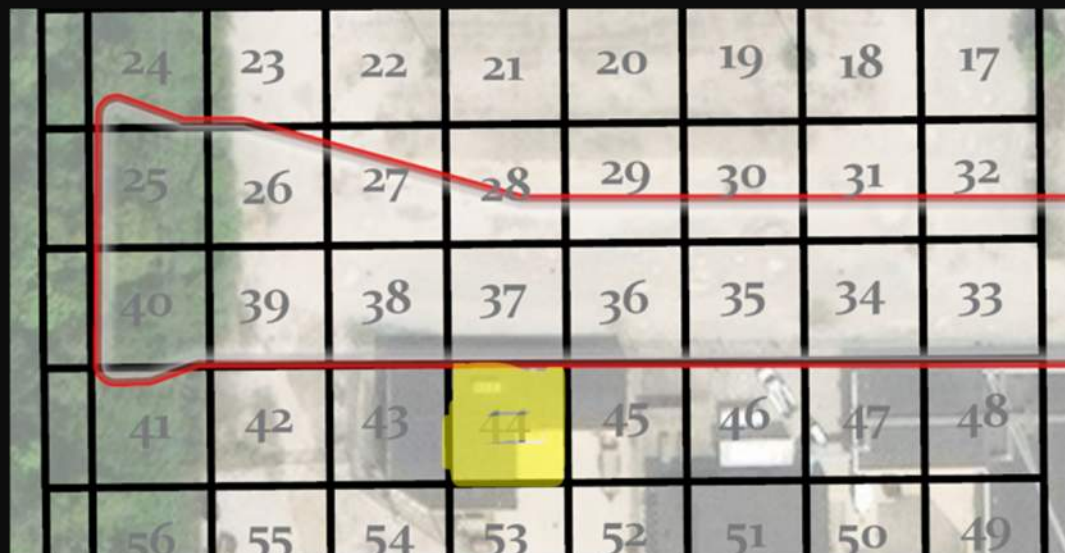
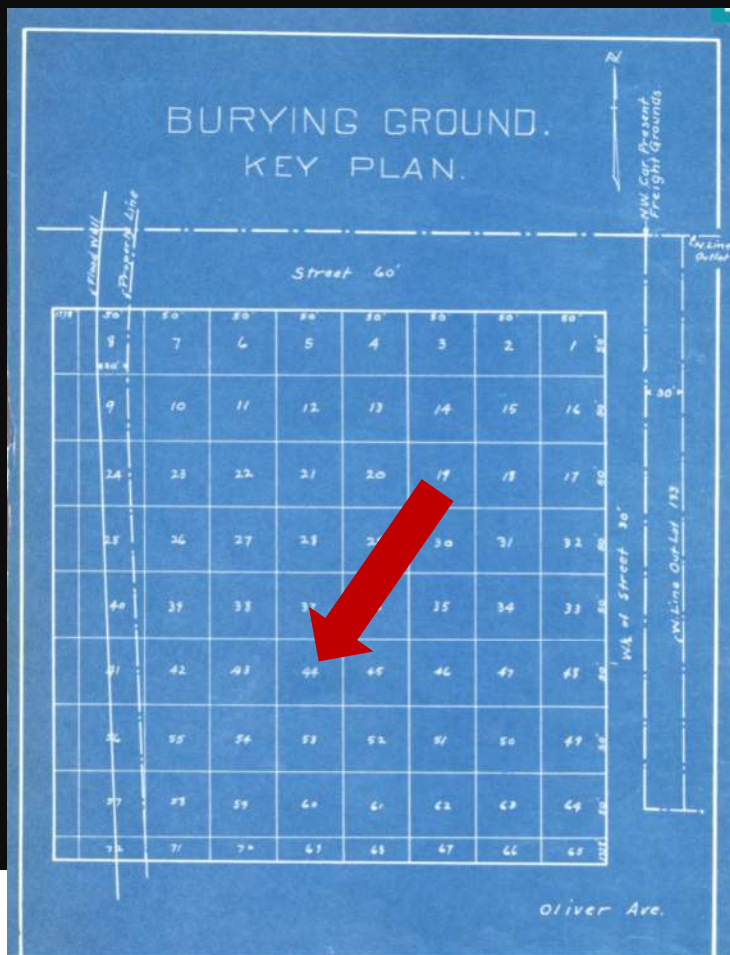
IDENTIFIED

Grave No.	Name	Condition of Stone	Where Reinterred	Remarks
1	Alfred Frazee	Broken- leaning against base	Floral Park	Stone repaired reerected
2	D.A.F.	No headstone- footstone between 2 Frazee graves	Floral Park	" " "
3	J.M. Frazee	Broken in 3 pieces lying on grave	Floral Park	" not "

Example of Headstones with Footstones



Wikipedia





2025 Henry Street Excavation
Footstone Discovery

Zenas Lake

Greek Origin = shortened form of
"Zenodoros", meaning "gift of Zeus"

Zenas Lake headstone: Relocated in 1924 excavations to Floral Park Cemetery

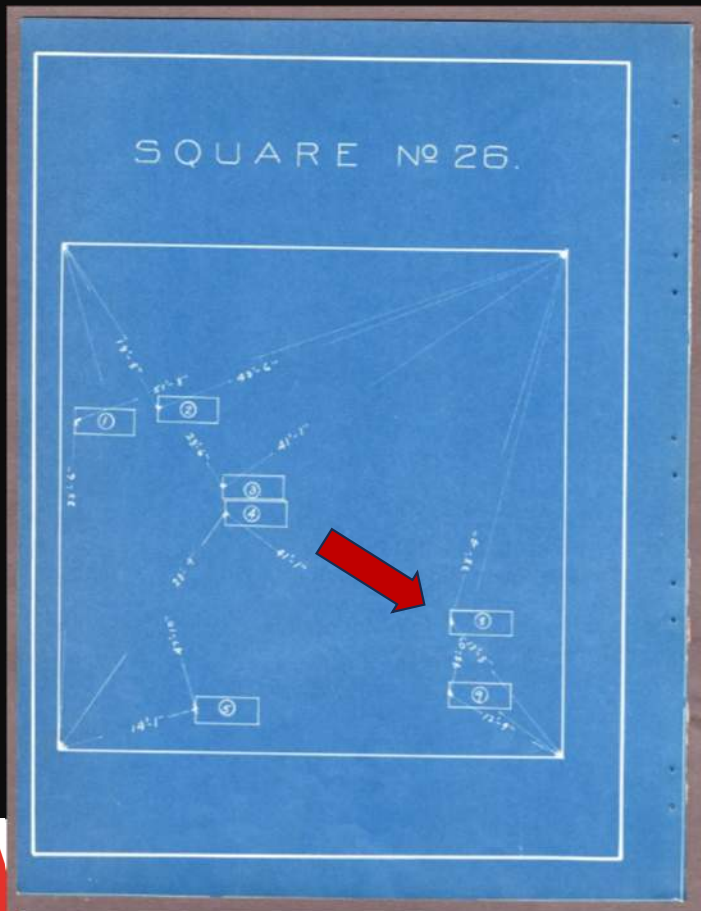
Floral Park Cemetery c. 2018



Transcript of the Gravestones, 1920

Sacred
to the memory of
Zenas Lake
Born February 1 1770
Died May 17 1842

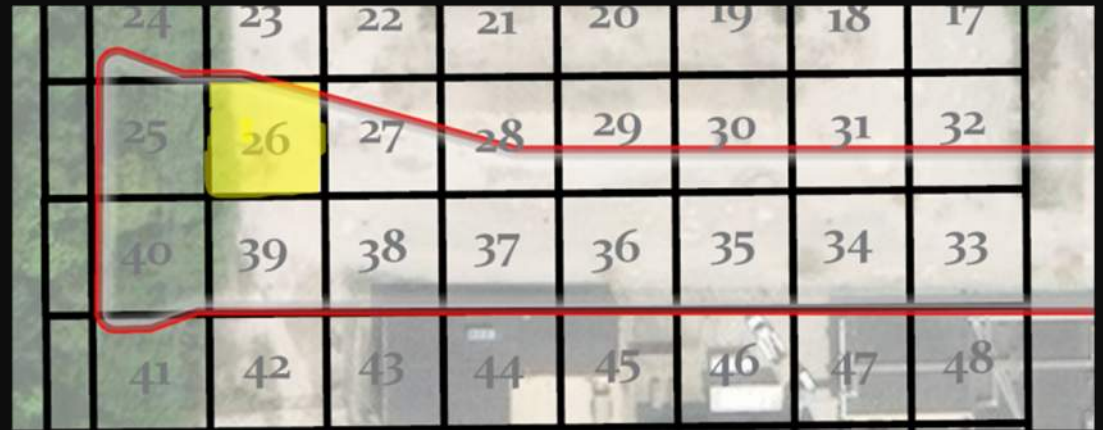
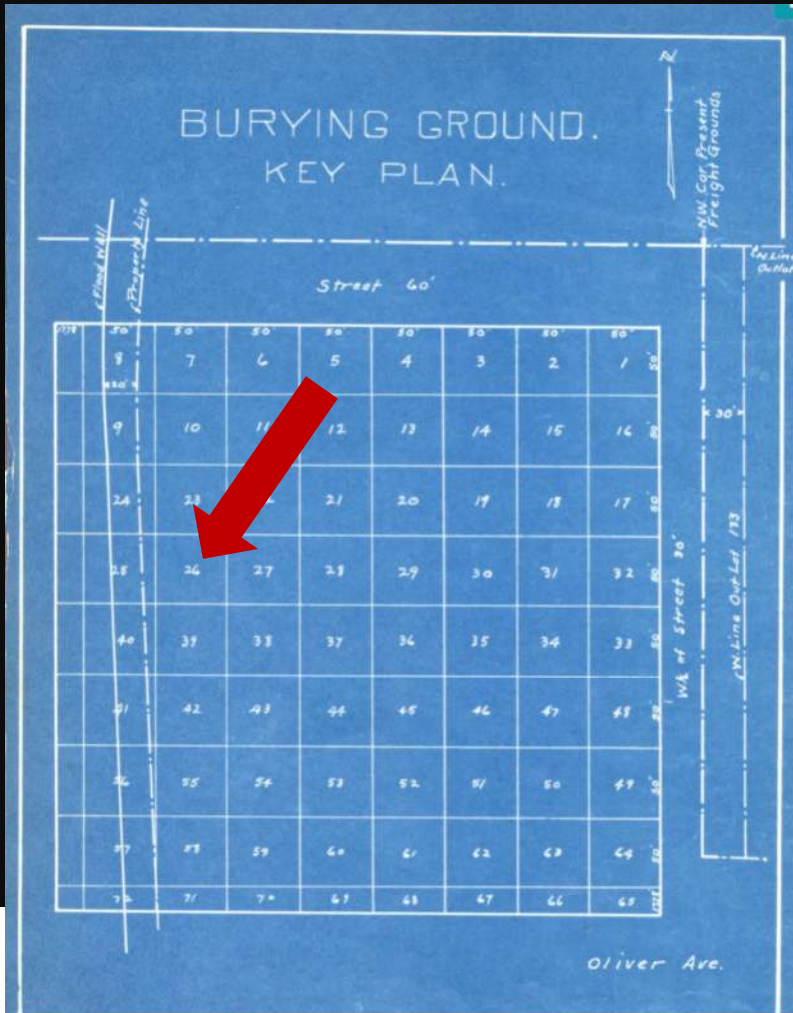
Part of Green Lawn Cemetery Burials Moved To Other Cemeteries 1924, Indiana State Library



S Q U A R E N O . 2 6

IDENTIFIED

Grave No.	Name	Condition of Stone	Where Reinterred	Remarks
1	Richard) Hanna) Williams	Broken- lying on grave	Floral Park	Identified by their son. Stone repaired reerected.
2	Catherine Dobson	Broken- lying on grave	Floral Park	Stone repaired reerected
3	Laura E. Church	Broken- lying on grave	Floral Park	" " "
4	William D. Church	Broken- lying on grave	Floral park	" " "
5	R. Hood) A--d Naney) Walter Hood	Homemade stone Standing	Floral Park	Stone reerected
8	Zenas Lake	Standing	Floral Park	" "
9	Mary Hartpence	Standing	Floral Park	" "



Floral Park Cemetery, 2018



2025 Henry Street Excavation



Indiana State Library Digital Collections: <https://digitalcollections.library.in.gov/>

The screenshot displays the Indiana State Library Digital Collections interface. At the top, the header includes the library's name and a search bar with a magnifying glass icon and a menu icon. Below the header, the left sidebar contains three main sections: 'Collections' with checkboxes for various records, 'Subject' with a list of categories and item counts, and 'Creator' with a list of names. The main content area shows search results for the term 'greenlawn'. It includes a search bar with the term entered, a 'Sort by' dropdown set to 'Relevance', and a 'Results per page' dropdown set to '20'. The search results are displayed in a grid of five items, each with a thumbnail image and a title. The titles are: 'A transcript of the grave', 'Re-interne...', 'Greenlawn Cemetery', 'Old burying ground of the', and 'Part of Green Lawn'. Each item has a 'Records 1-5 of 5' indicator below it.

INDIANA STATE LIBRARY Digital Collections

Advanced Search

Collections

- ☐ Select All Collections
- ☐ Adams County Public Records
- ☐ Adams County's Contribution to Indiana History
- ☐ Arts and Entertainment
- ☐ Avon High School
- ☐ Boone County Heritage

Show All

Cancel Update

Subject

- cemeteries (5)
- graves (5)
- Greenlawn Cemetery (Indianapolis, Ind.) (5)
- Indianapolis (Ind.) (5)
- tombs & sepulchral monuments (4)
- emmerich manual high school (Indianapolis, Ind.) (1)
- maps (1)
- photographs (1)
- plat maps (1)
- surveying (1)

Creator

- garmen, harry o. (1)
- moore, j. r. h. (1)
- terminal reality corporation (1)
- terminal realty corporation (1)

Searching items in: Indiana State Library Genealogy Collection Sort by: Relevance Results per page: 20

Search Terms: greenlawn

Records 1-5 of 5

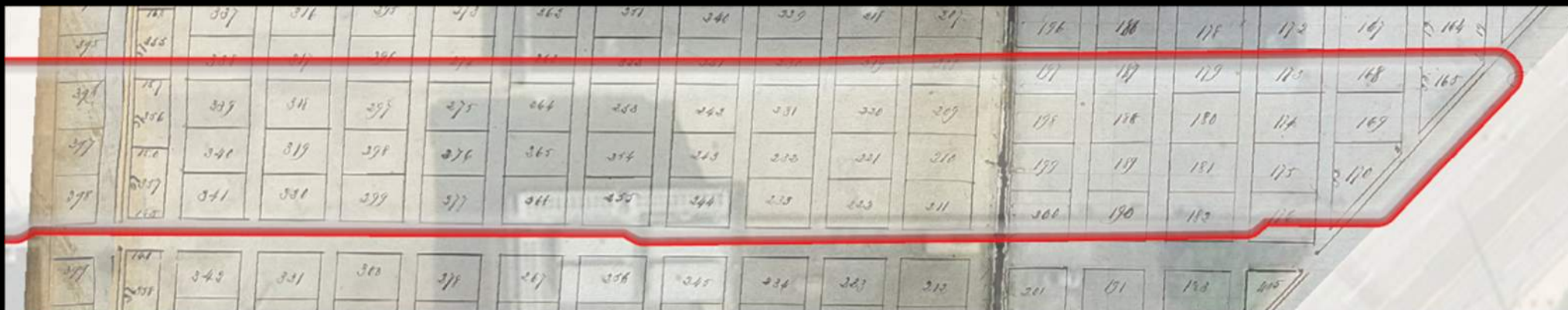
- A transcript of the grave
- Re-interne...
- Greenlawn Cemetery
- Old burying ground of the
- Part of Green Lawn

Records 1-5 of 5

Old Burying Ground

New Burying Ground (Union Cemetery)





Union Cemetery Deed Holders listed in Marion County Recorder Deed Books

Lot 169: Richard Gilbert • Jan 14, 1850

Lot 180: Dorothy Rauschaupt • Oct 19, 1850

Lot 181: Phillip Socke • Oct 19, 1850

Lot 182: Conrad Bea • Oct 13, 1850

Lot 188: George Lowe (North Half) • Nov 18, 1850

Lot 189: Matthew Alford/George Northway • Jul 27, 1850

Lot 199: Ernst Henry Koller • Jul 1, 1851

Lot 231-233: Institute for the Blind • Jan 13, 1853

Lot 255: Phillip Pressel (North Half) • Oct 13, 1853

Lot 275: Austin H. Brown • Mar 19, 1857

Lot 319: Sarah Hamilton (South Half) • Mar 15, 1859

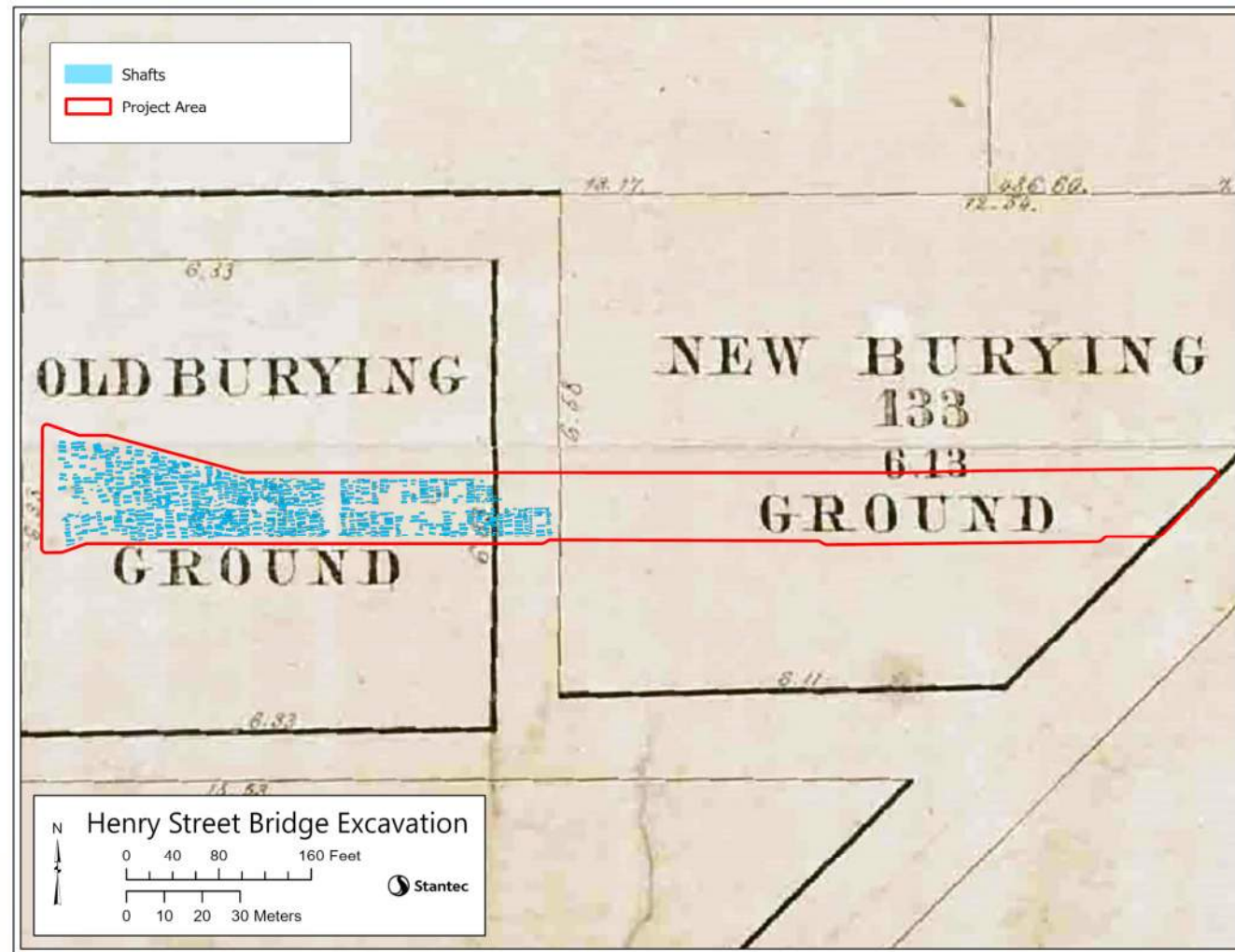
Lot 340: Frederick Hillman Et al. • Sept 10, 1856

Artifact Status & Summary

**Principal Investigator
Dr. Brooke L. Drew**

Presentation contains digitized models of human remains

Henry Street Bridge Project Preliminary Artifact Summary



Henry Street Bridge Project Preliminary Artifact Summary

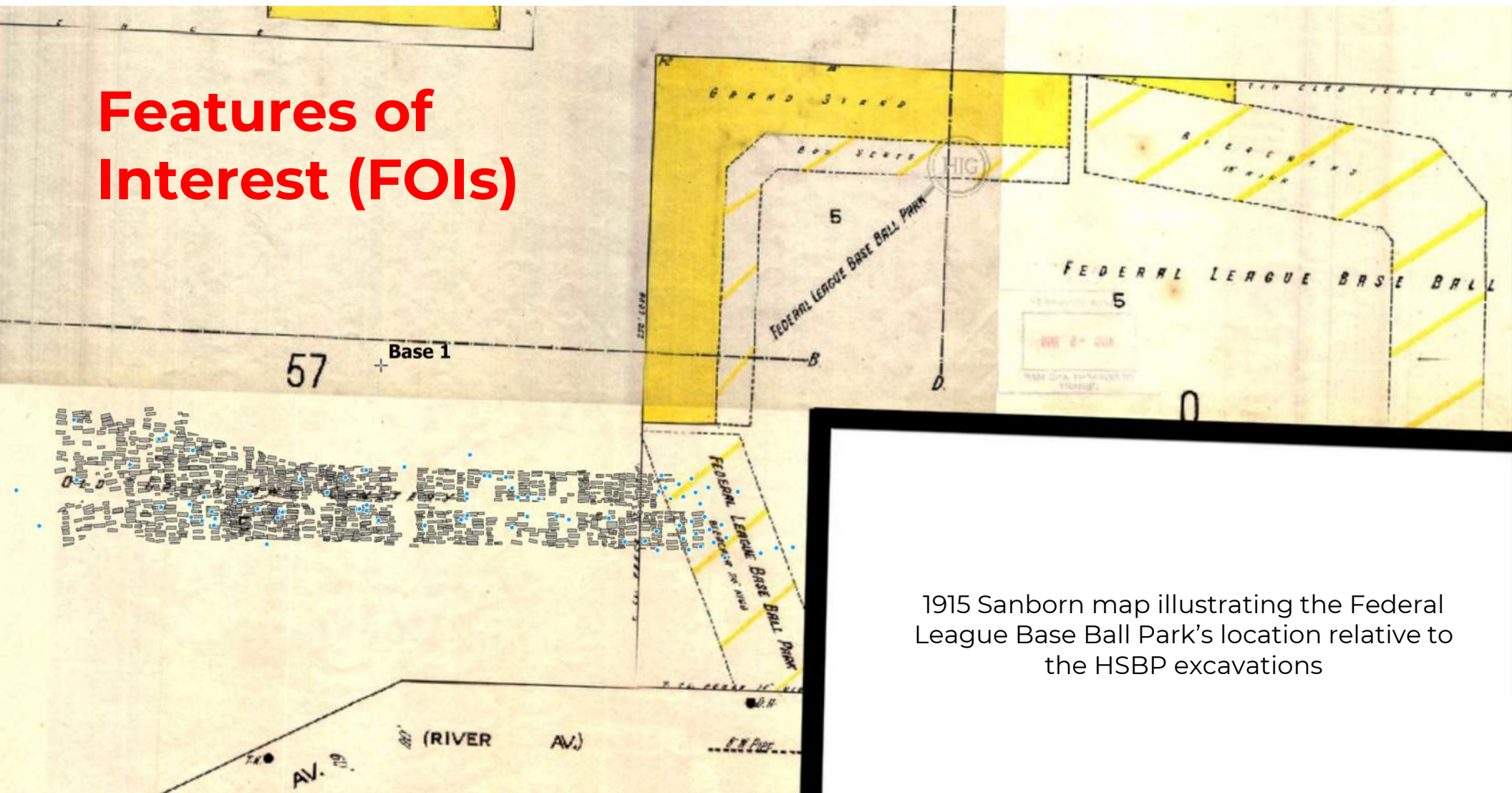
- Features of Interest (FOIs)
- Buried Monuments
- Coffin & Casket Hardware
- Burial Containers
- Personal Items
- Post-Fieldwork Analysis
- Post-Analysis Reburial

Features of Interest (FOIs)



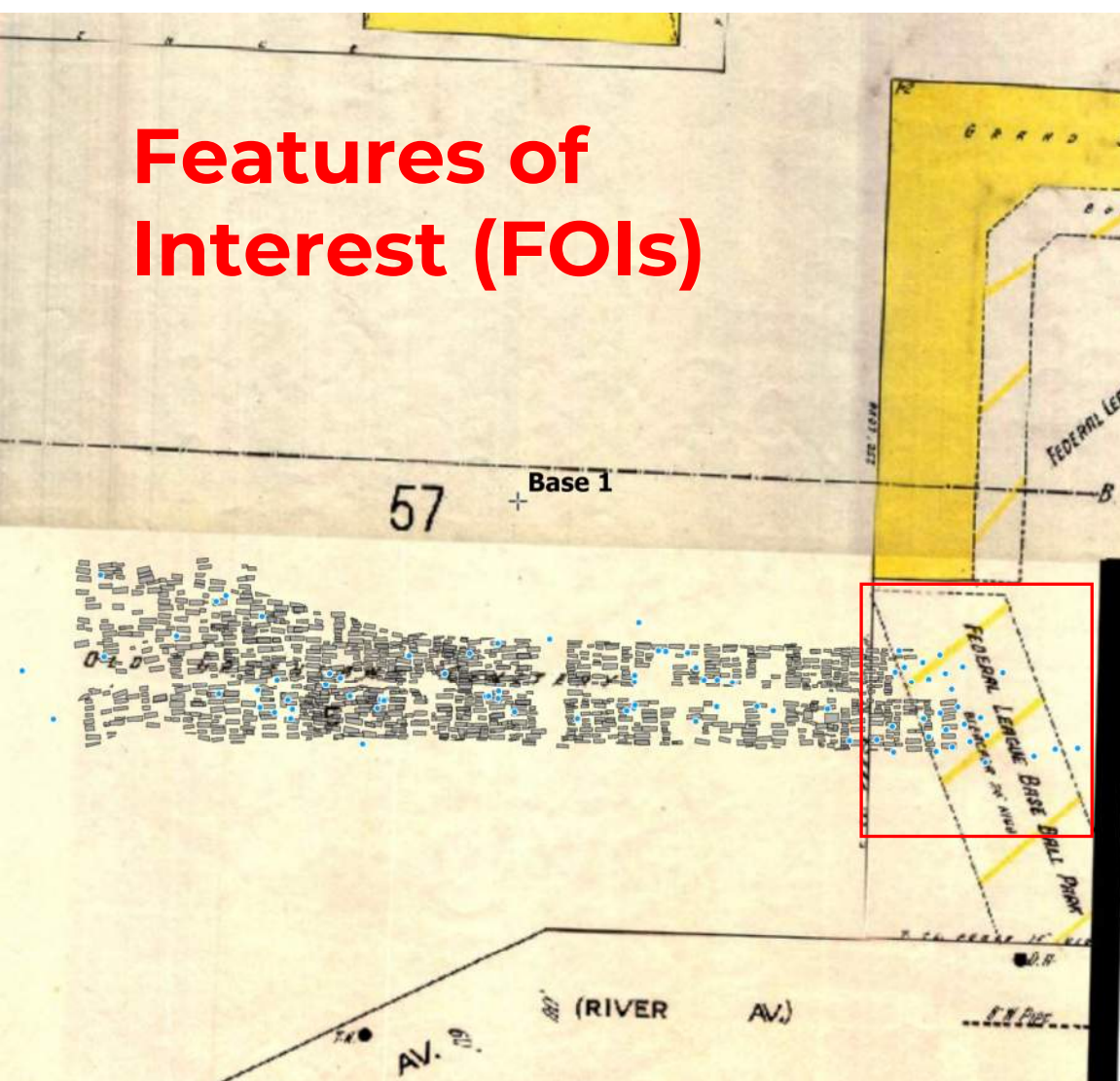
FOIs (blue) mapped thus far within the HSBP project boundaries

Features of Interest (FOIs)



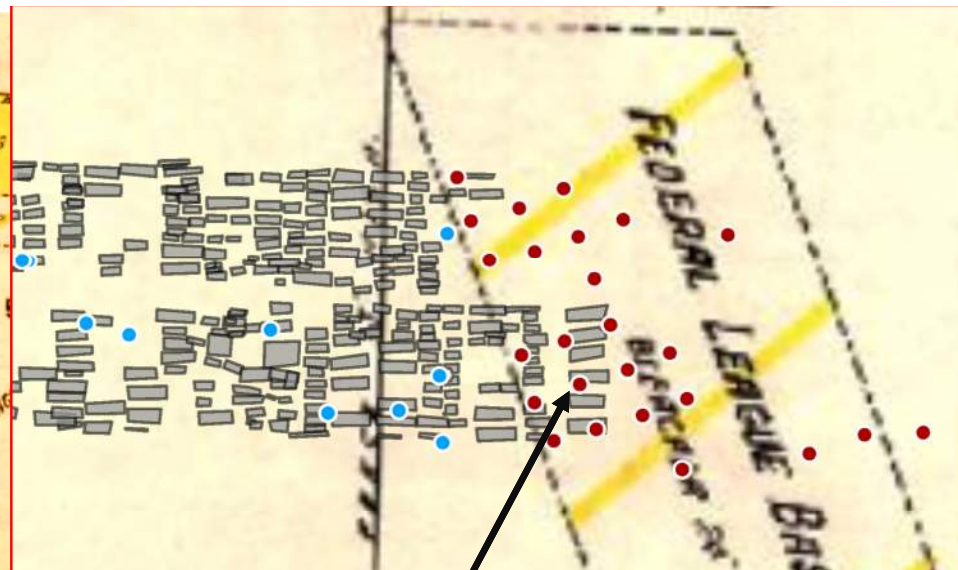
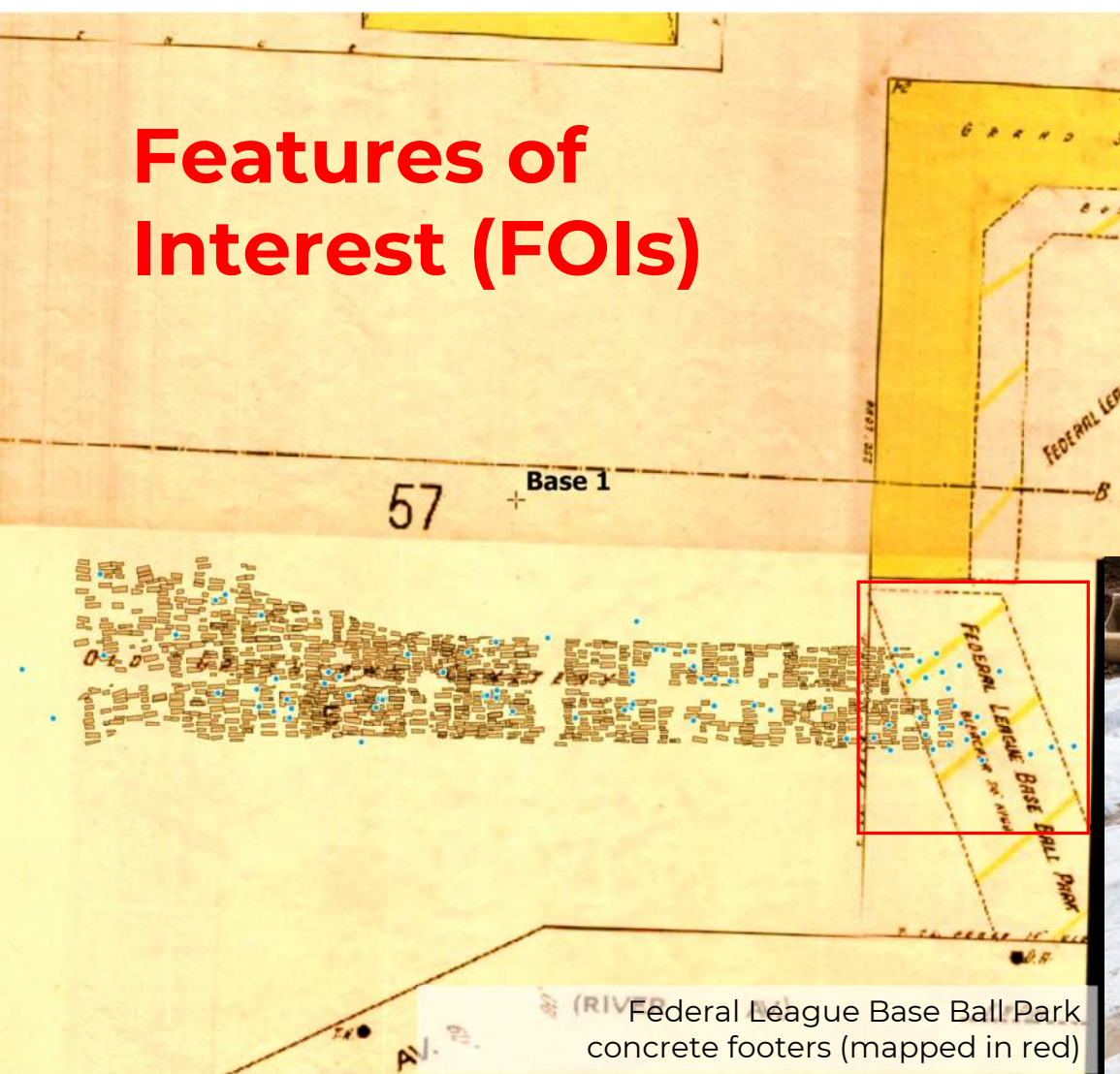
1915 Sanborn map illustrating the Federal League Base Ball Park's location relative to the HSBP excavations

Features of Interest (FOIs)



1915 Sanborn map detail showing structures associated with the stadium's right field bleachers

Features of Interest (FOIs)

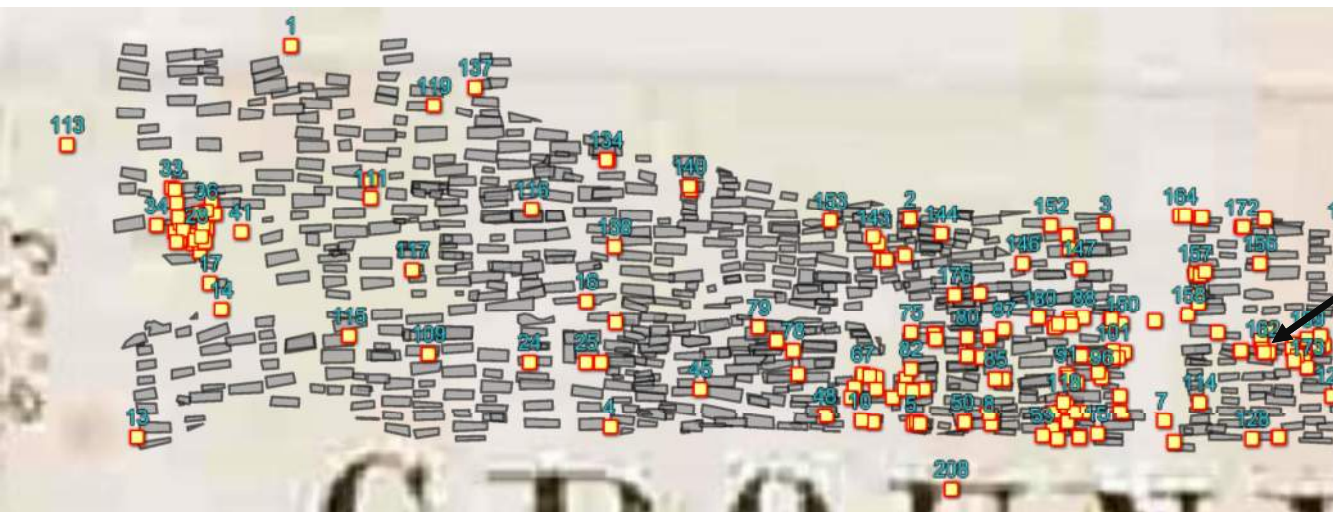


Buried Monuments



HSBP excavation map showing location of buried monuments

Buried Monuments



Example of *in situ* documentation of buried footstone

Buried Monuments



Location of *in situ* headstone
& footstone in relation to
Individual 781's burial shaft
(intact older child)



Coffin Hardware

- Decorative hardware
 - Handles
 - Plaques
 - Coffin screws
 - Thumbscrews
 - Escutcheons
 - Ornaments
 - Ornamental tacks
 - Coffin lace
 - Viewing windows
 - Caplifters



Examples of coffin & casket hardware from Bethel Cemetery

Coffin Hardware



Handle from Individual 518
(intact unidentified adult)

114 COFFIN HANDLES—SILVER-PLATED ON BRASS.

Coffin Handles,—continued.

Nos. 211 to 218.

Nos.	211	212	213	214	215	216	217	218
Size,	2½	2¾	3	3¼	3½	3¾	4	4¾
Per doz. pairs,	\$3.25	3.50	3.75	4.00	4.50	5.00	6.25	7.50

No. 232. Masonic, Patented.

No. 232, Masonic Centerpiece and Handle, per dozen pairs, \$16.00

No. 234, Plain Burnished Center, with Masonic Handle, " 16.00

No. 236. Patented.

No. 236, Plain Burnished Center, Book with Star on Handle, - - - per dozen pairs, \$16.00

No. 238. Patented.

No. 238, Plain Burnished Center, Book with Cross on Handle, - - - per dozen pairs, \$16.00

COFFIN HANDLES—SILVER-PLATED ON BRASS. 115

Coffin Handles,—continued.

No. 240. Patented.

No. 240, Cross on Burnished Center, Book with Cross on Handle. - - - per dozen pairs, \$16.00

No. 252. Military, Patented.

No. 252, Design of the Plate is Stars and Stripes, U. S. shield and sword, surrounded by a Myrtle Wreath on a burnished Center, with a Wreath of Oak leaves and acorns surrounding the whole and forming the main frame work of the plate. The handle has for a centerpiece two swords.

Per dozen pairs, - - - \$16.00

No. 336.

No. 336, Cast-center, - - - per dozen pairs, \$10.75

Coffin handles advertised in the 1866 Sargent & Co. hardware catalog

Coffin Hardware

- Decorative hardware
 - Handles
 - Plaques
 - Coffin screws
 - Thumbscrews
 - Escutcheons
 - Ornaments
 - Ornamental tacks
 - Coffin lace
 - Viewing windows
 - Caplifters



Handles, thumbscrews & escutcheons, plaque, and decorative tacks from Individual 132 (intact unidentified infant)

Coffin Hardware

- Decorative hardware
 - Handles
 - Plaques
 - Coffin screws
 - Thumbscrews
 - Escutcheons
 - Ornaments
 - Ornamental tacks
 - Coffin lace
 - Viewing windows
 - Caplifters



Handles & plaque with
"Our Darling"
from Individual 147
(intact unidentified infant)



Burial Containers



Orthomosaic image generated from photogrammetric model of Individual 159 (intact unidentified infant) preserved coffin

Matrix removed from top interior portion exposing the coffin sides and ornamental tacks

THE CITY OF INDIANAPOLIS

6:20 AM Tue Jul 1

Burial No. 369

Coffin or Casket Description

Outer Box Present?
Indicate whether there is evidence for an outer box. If Yes, complete the following **Outer Box Measurements**.

☒ No ☐ Yes


Coffin or Casket Material
Select all materials utilized for the coffin or casket manufacture.


☒ Wood ☐ Cast iron ☐ Zinc ☐ Other metal ☐ Other


Coffin Wood Preserved?
If Yes, complete the following **Preserved Coffin Wood** page.


☐ No ☐ Yes


Burial Container Type
Click on the burial container type on the reference window. Complete the relevant **Measurement** fields below.
If the type is not represented in this image, select Other and complete the **Other Burial Container Type** field below.



Rectangular Casket



Octagonal Casket


Elliptical/Oval-ended Casket


Six-sided (kerfed) Coffin


Six-sided (mitered) Coffin


Tapered Box Coffin


Hexagonal/Tapered Hybrid Coffin

You chose: Six_sided_mitered_coffin

Six-Sided/Tapered Coffin Maximum Length (cm)
Measure from the coffin head to coffin foot.

175

Six-Sided/Tapered Coffin Maximum Width (cm)
Measure between the coffin's widest points at the shoulder.

32

Six-Sided/Tapered Coffin Head-to-Shoulder Length (cm)
Place a measuring tape across the widest points of the coffin shoulder. Measure from this tape to the center of the coffin head in a perpendicular line.

28

Six-Sided/Tapered Coffin Foot Width (cm)
Measure the maximum width of the coffin foot.

15

Viewing Window Present?
If Yes, complete the following **Viewing Window Description** page below.

☒ No ☐ Yes

Additional Burial Container Comments?
If Yes, describe in **Additional Burial Container Comments** below.

☒ No ☐ Yes

Burial Containers



Orthomosaic image generated from photogrammetric model of Individual 159 (intact unidentified infant) preserved coffin

Exposed coffin lid showing separate segment with caplifter covering viewing window

THE CITY OF INDIANAPOLIS

6:20 AM Tue Jul 1

Burial No. 369

Coffin or Casket Description

Outer Box Present?
Indicate whether there is evidence for an outer box. If Yes, complete the following **Outer Box Measurements**.

☒ No ☐ Yes


Coffin or Casket Material
Select all materials utilized for the coffin or casket manufacture.

☒ Wood ☐ Cast iron ☐ Zinc ☐ Other metal ☐ Other


Coffin Wood Preserved?
If Yes, complete the following **Preserved Coffin Wood** page.

☐ No ☐ Yes


Burial Container Type
Click on the burial container type on the reference window. Complete the relevant **Measurement** fields below.
If the type is not represented in this image, select Other and complete the **Other Burial Container Type** field below.




Rectangular Casket




Octagonal Casket




Elliptical/Oval-ended Casket




Six-sided (kerfed) Coffin



Six-sided (mitered) Coffin



Tapered Box Coffin



Hexagonal/Tapered Hybrid Coffin

You chose: Six_sided_mitered_coffin

Six-Sided/Tapered Coffin Maximum Length (cm)
Measure from the coffin head to coffin foot.

175

Six-Sided/Tapered Coffin Maximum Width (cm)
Measure between the coffin's widest points at the shoulder.

32

Six-Sided/Tapered Coffin Head-to-Shoulder Length (cm)
Place a measuring tape across the widest points of the coffin shoulder. Measure from this tape to the center of the coffin head in a perpendicular line.

28

Six-Sided/Tapered Coffin Foot Width (cm)
Measure the maximum width of the coffin foot.

15

Viewing Window Present?
If Yes, complete the following **Viewing Window Description** page below.

☒ No ☐ Yes

Additional Burial Container Comments?
If Yes, describe in **Additional Burial Container Comments** below.

☒ No ☐ Yes

Burial Containers



Orthomosaic image generated from photogrammetric model of Individual 159 (intact unidentified infant) preserved coffin

Separate lid segment removed to reveal intact oval viewing window

THE CITY OF INDIANAPOLIS

6:20 AM Tue Jul 1

Burial No. 369

Coffin or Casket Description

Outer Box Present?
Indicate whether there is evidence for an outer box. If Yes, complete the following **Outer Box Measurements**.

☒ No ☐ Yes

Coffin or Casket Material
Select all materials utilized for the coffin or casket manufacture.

☒ Wood ☐ Cast iron ☐ Zinc ☐ Other metal ☐ Other

Coffin Wood Preserved?
If Yes, complete the following **Preserved Coffin Wood** page.

☐ No ☐ Yes

Burial Container Type
Click on the burial container type on the reference window. Complete the relevant **Measurement** fields below.
If the type is not represented in this image, select Other and complete the **Other Burial Container Type** field below.

Rectangular Casket

Octagonal Casket

Elliptical/Oval-ended Casket

Six-sided (kerfed) Coffin

Six-sided (mitered) Coffin

Tapered Box Coffin

Hexagonal/Tapered Hybrid Coffin

You chose: Six_sided_mitered_coffin

Six-Sided/Tapered Coffin Maximum Length (cm)
Measure from the coffin head to coffin foot.

175

Six-Sided/Tapered Coffin Maximum Width (cm)
Measure between the coffin's widest points at the shoulder.

32

Six-Sided/Tapered Coffin Head-to-Shoulder Length (cm)
Place a measuring tape across the widest points of the coffin shoulder. Measure from this tape to the center of the coffin head in a perpendicular line.

28

Six-Sided/Tapered Coffin Foot Width (cm)
Measure the maximum width of the coffin foot.

15

Viewing Window Present?
If Yes, complete the following **Viewing Window Description** page below.

☒ No ☐ Yes

Additional Burial Container Comments?
If Yes, describe in **Additional Burial Container Comments** below.

☒ No ☐ Yes

Digital Documentation



Documentation of ornamental tacks for Individual 696 (intact unidentified adult)
using Survey123 sketch function

Digital Documentation

Lidar documentation of caskets
containing Individuals 642-1 & 642-2
(intact unidentified perinates)

THE CITY OF INDIANAPOLIS

Personal Items

- Clothing
- Footwear
- Jewelry
- Hair Accessories
- Medical/Dental
- Incidental Items
- Funerary Offerings

Survey123
excavation form
artifact category
inventory page

2:25 PM Sat Jul 5

Burial No. 957

Material Culture

Artifacts Present

Select ALL artifact categories recovered from the feature and complete the following relevant pages. Definitions of categories are as follows:

- **Hardware - utilitarian** includes items such as nails, iron screws, ferrous metal hinges, brackets, outer box hooks, and outer box turn keys.
- **Hardware - decorative** includes coffin/casket handles, plaques, decorative hinges, white metal coffin screws, ornamental tacks, thumbscrews, escutcheons, ornaments, and caplifters.
- **Personal items - clothing** includes buttons, cuff or collar closures, buckles, clothing fasteners (e.g., rivets, clasps and hooks), safety pins, and straight pins.
- **Personal items - footwear** includes any material related to shoes or boots (e.g., preserved leather, wooden heels, eyelets).
- **Personal items - jewelry** includes personal adornments (e.g., rings, decorative pins, and beads).
- **Personal items - hair accessories** includes combs and pins of various materials and styles used to style hair.
- **Personal items - medical/dental** includes prosthetics, orthopedic braces, and dentures.
- **Personal items - funerary offerings or objects** includes items intentionally or unintentionally interred with the decedent (e.g., figurines, rosaries, coins).
- **Textiles** may include burial shrouds, coffin or casket lining, or clothing, and should be described in the separate **Textile** page.
- **Fill artifacts** are items recovered above or below the feature in either the shaft or coffin fill that were not intentionally placed with the burial.

☐ Hardware - utilitarian
 ☐ Hardware - decorative
 ☒ Personal items - clothing
 ☒ Personal items - footwear
 ☒ Personal items - jewelry
 ☒ Personal items - hair accessories
 ☒ Personal items - medical/dental
 ☒ Personal items - funerary offerings or incidental objects
 ☐ Textiles
 ☐ Fill artifacts

☐ Other

Material Culture Bag Labeling Instructions

Hardware & Larger Objects

Template (front of bag) Example

Personal Items & Smaller Objects

10 of 17

Personal Items

- Clothing
- Footwear
- Jewelry
- Hair Accessories
- Medical/Dental
- Incidental Items
- Funerary Offerings

Clothing item recording page from Survey123 excavation form

Image of skeleton in form is an illustration

9:14 AM Tue Jul 1

Burial No. 369

Personal Items - Clothing

Clothing Item Cataloging
Clothing items should be cataloged separately, assigned unique catalog numbers, i.e., each button should be assigned its own number, and recorded in their own subform. Delicate or fragile items should be placed in a labeled pill bottle or small box before being placed in the bag. If there is more than one, individual bags/vials/boxes should be placed in a single labeled bag. Refer to the reference on the Material Culture page for labeling instructions.

Number of bags needing catalog numbers
5

▼ **Clothing Item ID: 369 - CI - 1**

Clothing Item Images
Take photographs of clothing items here. Images should details of clothing that will assist in material culture analyses, specifically any in situ images of artifacts in relation to the remains and burial container **prior** to removal from the feature.

Clothing Items
Select the clothing item **for this record**.

☒ Button (ceramic or glass)
 ☐ Button (metal - nonmilitary)
 ☐ Button (metal - military)
 ☐ Button (bone or shell)
 ☐ Button (rubber)
 ☐ Button (other)
 ☐ Collar/cuff closure
 ☐ Buckle
 ☐ Clothing fastener
 ☐ Safety pin
 ☐ Straight pin
 ☐ Other

Skeleton Diagram
Select the box where the object **in this record** was recovered in relation to the remains. Add any other relevant spatial information in the **Clothing Items Comments** below.

You chose: anterior_inferior_cervical

Clothing Items Distribution
Briefly describe the overall patterning and distribution of clothing items.

White ceramic button with 4 holes just a over sternum

1 of 5

13 of 14

Personal Items

- Clothing
- Footwear
- Jewelry
- Hair Accessories
- Medical/Dental
- Incidental Items
- Funerary Offerings

REDACTED

Photogrammetric model of Individual 326
(intact unidentified adult) showing location of
cuprous buttons (green) and ferrous buttons (brown)



Personal Items

- Clothing
- Footwear
- Jewelry
- Hair Accessories
- Medical/Dental
- Incidental Items
- Funerary Offerings



Example of a 4-button sack coat (2nd Lieutenant John G. Helmkamp of the 32nd Indiana Regiment)
Library of Congress
<https://www.loc.gov/item/2003673363/>



Personal Items

- Clothing
- Footwear
- Jewelry
- Hair Accessories
- Medical/Dental
- Incidental Items
- Funerary Offerings



Leather soles and wooden buttons from baby shoes recovered from Individual 517 (intact unidentified infant)

Personal Items

- Clothing
- Footwear
- Jewelry
- Hair Accessories
- Medical/Dental
- Incidental Items
- Funerary Offerings



Personal Items

- Clothing
- Footwear
- Jewelry
- Hair Accessories
- Medical/Dental
- Incidental Items
- Funerary Offerings

THE CITY OF INDIANAPOLIS

Large blown glass beads from necklace worn by Individual 875 (intact unidentified adult)



Brass & glass bead brooch adorning Individual 56 (intact unidentified adult)

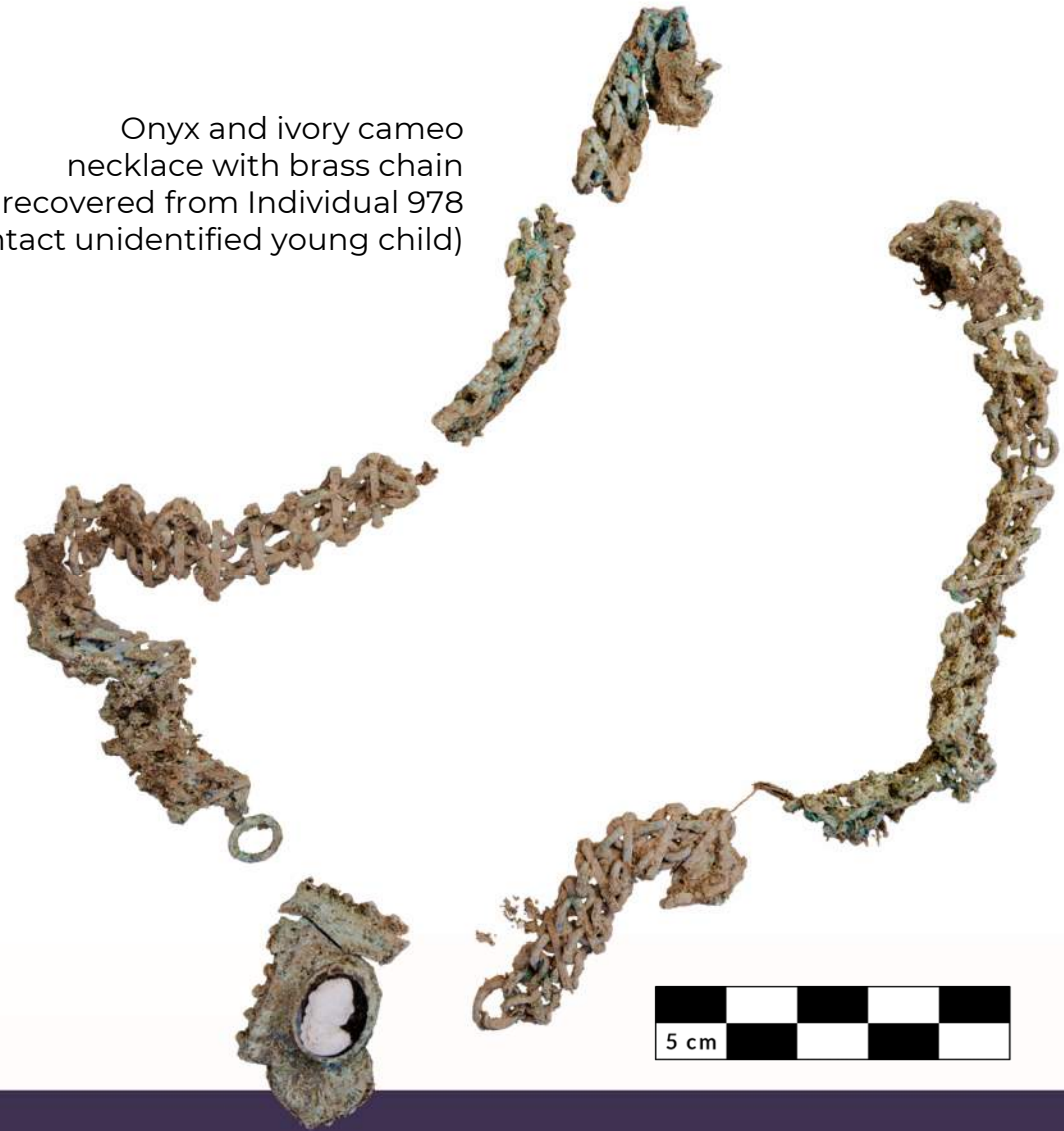


Brass ring found with Individual 470 (relocated unidentified adult)

Personal Items

- Clothing
- Footwear
- Jewelry
- Hair Accessories
- Medical/Dental
- Incidental Items
- Funerary Offerings

Onyx and ivory cameo
necklace with brass chain
recovered from Individual 978
(intact unidentified young child)



Personal Items

- Clothing
- Footwear
- Jewelry
- Hair Accessories
- Medical/Dental
- Incidental Items
- Funerary Offerings



Vulcanized rubber cinch hair pins
found with Individual 875
(intact unidentified adult)



Vulcanized rubber
band-style hair comb
worn by Individual 788
(intact unidentified younger child)

Personal Items

- Clothing
- Footwear
- Jewelry
- Hair Accessories
- Medical/Dental
- Incidental Items
- Funerary Offerings



Example young girls' hairstyles, c1860
(personal collection)



Vulcanized rubber
band-style hair comb
worn by Individual 788
(intact unidentified younger child)



Personal Items

- Clothing
- Footwear
- Jewelry
- Hair Accessories
- Medical/Dental
- Incidental Items
- Funerary Offerings



Vulcanized rubber and porcelain partial maxillary dentures recovered from Individual 322 (disturbed unidentified adult)



Early vulcanite denture from the British Dental Association Museum collection
(adapted from bda.org)

Personal Items

- Clothing
- Footwear
- Jewelry
- Hair Accessories
- Medical/Dental
- Incidental Items
- Funerary Offerings

Obverse



Reverse



1853 US Three Cent
uncovered with Individual 859
(intact unidentified younger child)



Extant collectable
1853 US Three Cent
(adapted from <https://www.pcg.com>)

Personal Items

- Clothing
- Footwear
- Jewelry
- Hair Accessories
- Medical/Dental
- Incidental Items
- Funerary Offerings



Small wrench discovered in pocket of Individual 696
(intact unidentified adult)

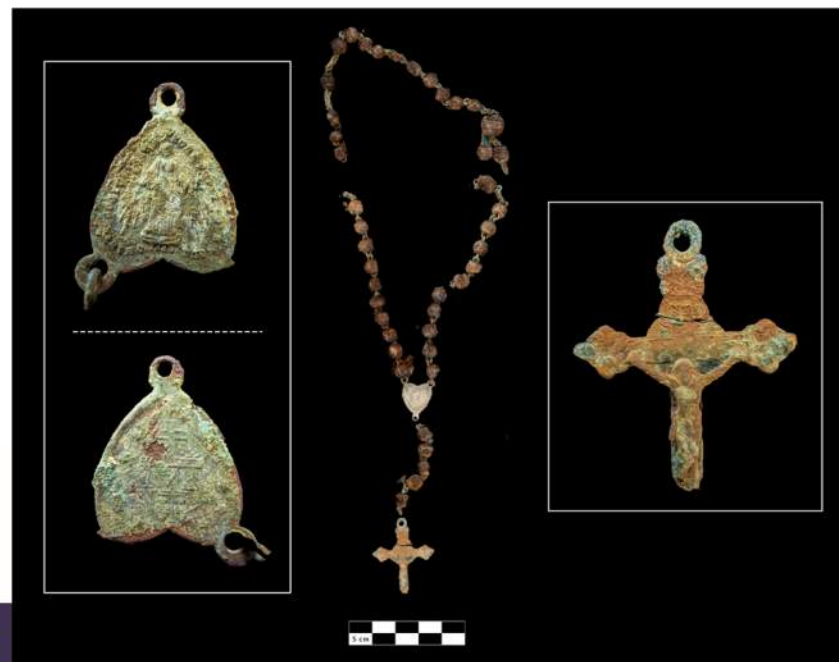
Personal Items

- Clothing
- Footwear
- Jewelry
- Hair Accessories
- Medical/Dental
- Incidental Items
- Funerary Offerings

Left, Hertwig porcelain doll head found in Individual 138 (disturbed unidentified infant)



Right, Schabmadonna figurine recovered from Individual 7 (disturbed unidentified infant)



Rosary found around Individual 518's folded hands (intact unidentified adult)

Personal Items

- Clothing
- Footwear
- Jewelry
- Hair Accessories
- Medical/Dental
- Incidental Items
- Funerary Offerings

REDACTED

Possible ceramic saint figurine from Individual 514 (intact unidentified toddler)



Personal Items

- Clothing
- Footwear
- Jewelry
- Hair Accessories
- Medical/Dental
- Incidental Items
- Funerary Offerings

REDACTED

Possible ceramic saint figurine from Individual 514 (intact unidentified toddler)



Personal Items

- Clothing
- Footwear
- Jewelry
- Hair Accessories
- Medical/Dental
- Incidental Items
- Funerary Offerings



3D model of possible ceramic saint figurine from Individual 514
(intact unidentified toddler)

Post-Analysis Reburial

- Upon completion of analysis and documentation, reinterment of all artifacts will occur alongside the individuals with whom they were recovered
- A detailed reburial plan will not be drafted until after full excavation of the project area

Osteological Analysis Status

**Principal Investigator
Dr. Jeremy Wilson**

Bioarchaeological Analyses

- 800+ burials and ca. 130 unassociated human remains transferred to IU Indianapolis lab
- Analytical Process:
 1. Processing
 2. Inventorying
 3. Analysis
 4. Documentation
- ~250 burials completed to date



Biological Profiles & Osteobiographies

- Profiles
 1. Age-at-death
 2. Sex
 3. Stature
 4. Biogeographic ancestry
 5. Antemortem conditions & pathologies
- Osteobiographies



Questions and Answers

Next Steps

- Continue the Community Advisory Group (CAG) meetings
- Submit documents, photos, and construction and archaeology updates on the project website at www.wridinfrastructure.com
- Continue research into genealogy

For More Information:

www.wridinfrastructure.com

contact@wridinfrastructure.com