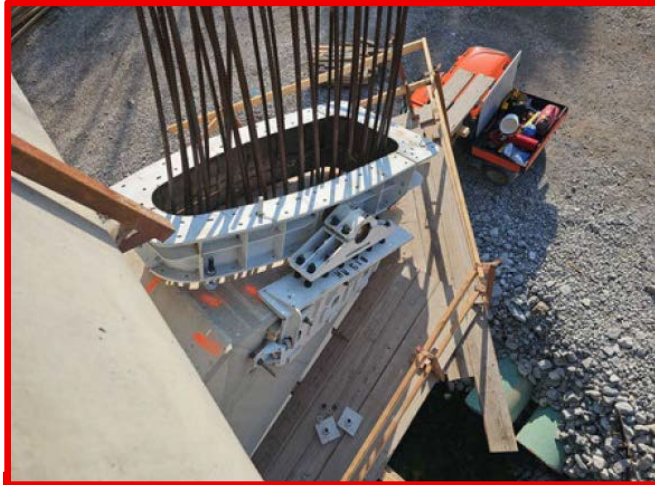


INDIANAPOLIS

DEPARTMENT OF PUBLIC WORKS

★

White River Innovation District – November Construction Update



Structural steel inside the bases for the rings

Henry Street Bridge:

- Continued setting forms and pouring sections of concrete barrier rail.
- Continued construction of deck supports for the rings.
- Continued installing sheet pile wall to protect the trail from eroding, upstream of the bridge.
- Placed riprap on the slopes in front of the end bents.

West Side:

- Starting placing pavement markings.
- All granite curb has been installed, including the section on Henry Street east of South White River Parkway (SWRP).
- Continued installing pavers on sidewalks and ramps.
- Continued forming and pouring concrete sidewalks, ramps and paver base west of Division Street, along Henry Street.
- Finished paving HMA surface on Henry Street west of Marion Street.
- Continued installing stone and wood benches.
- Continued placing planting soil and planting trees in the area west of Division Street.



Completed granite curb along Henry Street

Note: For weekly, more detailed construction updates, visit indy.gov: White River Innovation District.